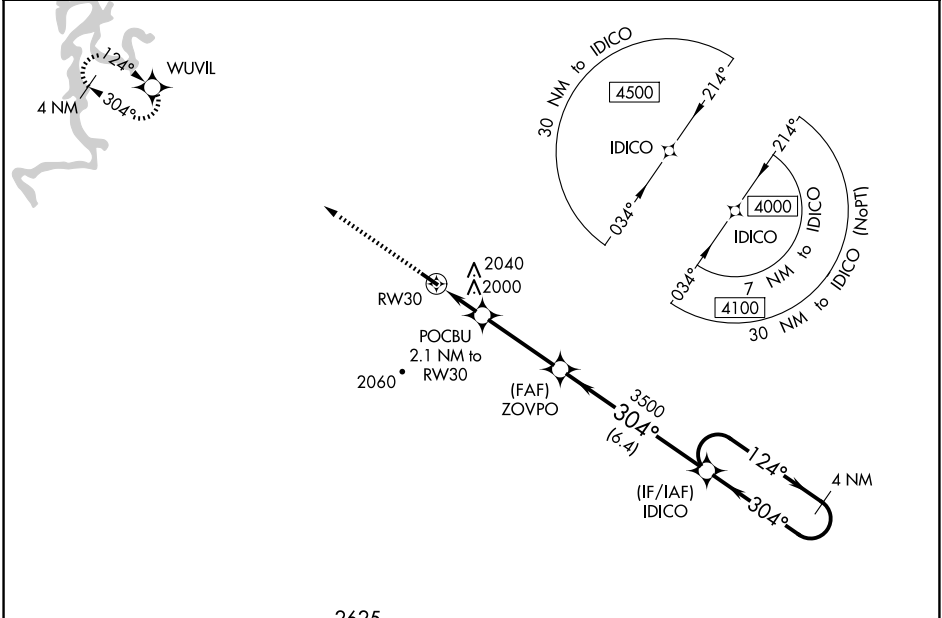


WAAS CH 40231 W30A	APP CRS 304°	Rwy Idg 3601 TDZE 1748 Apt Elev 1748
--	------------------------	---

RNAV (GPS) RWY 30

HUNTSVILLE MUNI (H34)

RNP APCH - GPS.		MISSED APPROACH: Climb to 4000 direct WUVIL and hold.
Baro-VNAV NA. Use Springdale altimeter setting; when not received, use Drake Fld altimeter setting and increase all DA 18 feet and all MDA 20 feet; increase LNAV/VNAV all Cats visibility ¼ mile. Circling NA to Rwys 3 and 21.		
ASG AWOS-3 124.675	RAZORBACK APP CON ★ 126.6 305.2	UNICOM 122.8 (CTAF) 0



ELEV 1748 TDZE 1748

4000 WUVIL

*LNAV only

POCBU 2.1 NM to RW30

RW30

ZOVPO 3500

IDICO 4 NM Holding Pattern

GP 3.00° TCH 40

CATEGORY	A	B	C	D
LPV DA	2047-1 299 (300-1)			NA
LNAV/VNAV DA	2410-2¼ 662 (700-2¼)			NA
LNAV MDA	2360-1 612 (700-1)	2360-1¾ 612 (700-1¾)		NA
CIRCLING	2360-1 612 (700-1)	2520-1 772 (800-1)	2520-2¼ 772 (800-2¼)	NA