

APP CRS
069°

Rwy Idg
TDZg
678

Apt Elev
689

RNAV (GPS) RWY 7

GREENE COUNTY RGNL (C'PP)

RNP APCH - GPS.

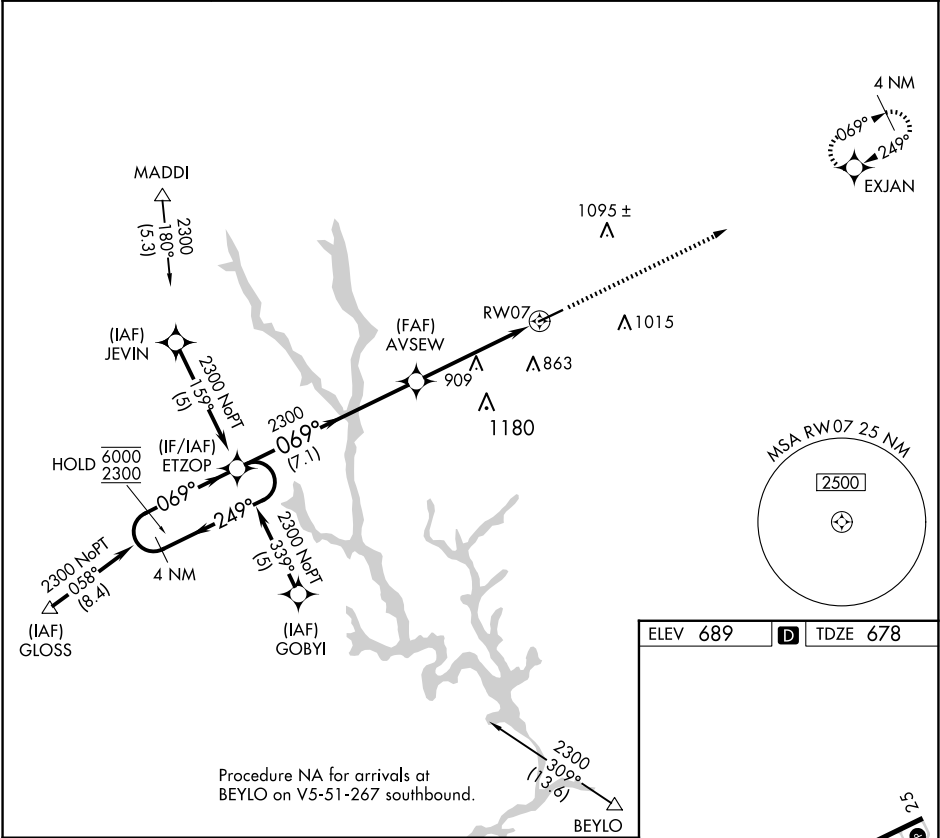
▼

▲

Rwy 7 helicopter visibility reduction below ¾ SM NA.

MISSED APPROACH: Climb to 2300 direct EXJAN and hold.

AWOS-3 124.525	ATLANTA APP CON ★ 132.475 291.1	GCO 121.725	UNICOM 122.8 (CTAF) 0
--------------------------	---	-----------------------	---------------------------------



4 NM Holding Pattern

ETZOP

AVSEW

6000
2300

←249°

069°→

2300

1.4 NM to RW07

3.04° TCH 34

RW07

7.1 NM

3.5 NM

1.4 NM

CATEGORY

A

B

C

D

LNAV MDA

1160-1

482 (500-1)

1160-1⅓

482 (500-1⅓)

ELEV 689

D

TDZE 678

HIRL Rwy 7-25 0