

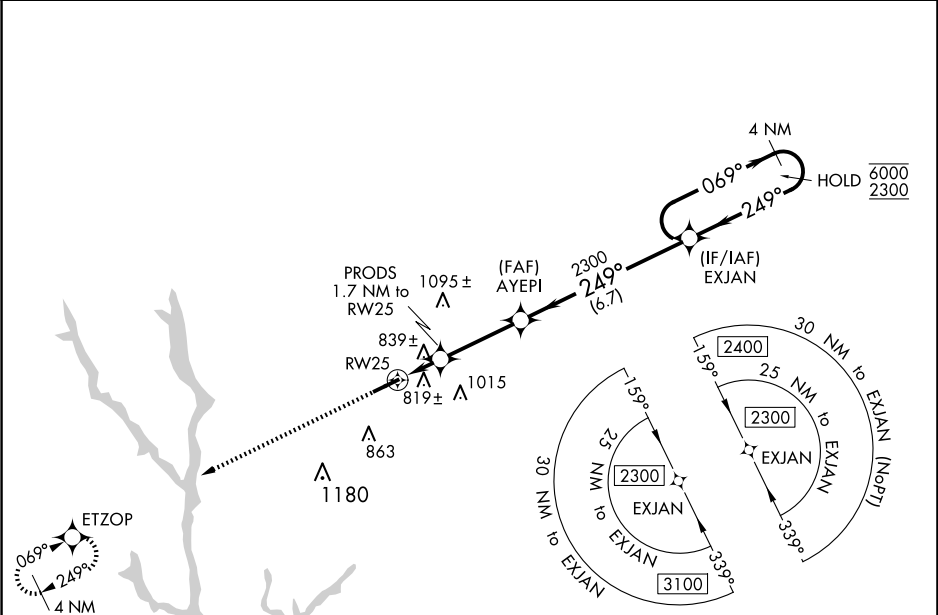
WAAS CH 70616 W25A	APP CRS 249°	Rwy Idg 5500 TDZE 689 Apt Elev 689
--	------------------------	---

RNAV (GPS) RWY 25

GREENE COUNTY RGNL (CPP)

RNP APCH - GPS.	MISSED APPROACH: Climb to 2300 direct ETZOP and hold.
Rwy 25 helicopter visibility reduction below ¾ SM NA. For uncompensated Baro-VNAV systems, LNAV/VNAV NA below -16°C or above 54°C.	

AWOS-3 124.525	ATLANTA APP CON ★ 132.475 291.1	GCO 121.725	UNICOM 122.8(CTAF) 0
--------------------------	---	-----------------------	--------------------------------



ELEV 689	D	TDZE 689
----------	----------	----------

2300

ETZOP

VGSI and RNAV glidepath not coincident (VGSI Angle 3.00/TCH 30).

4 NM Holding Pattern

EXJAN

PRODS 1.7 NM to RW25

1.1 NM to RW25

1280

2300

GP 3.01° TCH 55

069° → 6000

← 249° 2300

1.1 0.6 NM 3.2 NM 6.7 NM

CATEGORY	A	B	C	D
LPV DA	981-7⁄8		292 (300-7⁄8)	
LNAV/VNAV DA	1065-1		376 (400-1)	
LNAV MDA	1080-1 391 (400-1)		1080-1 3⁄8 391 (400-1 1⁄8)	
C CIRCLING	1140-1 451 (500-1)	1180-1 491 (500-1)	1320-1 3⁄4 631 (700-1 3⁄4)	1480-2 1⁄2 791 (800-2 1⁄2)