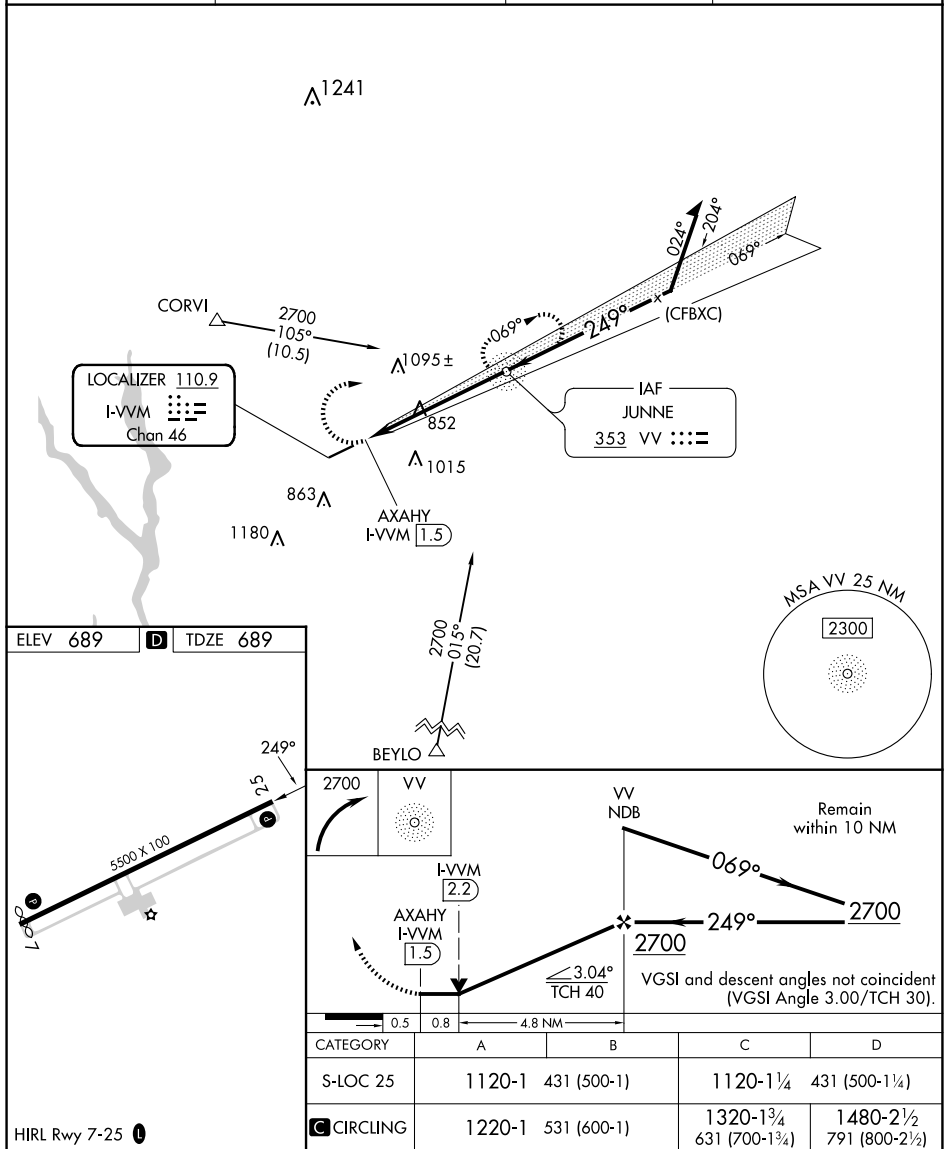


LOC RWY 25
GREENE COUNTY RGNL (CPP)

T Rwy 25 helicopter visibility reduction below $\frac{3}{4}$ SM NA.
A NA Localizer unusable $\frac{1}{2}$ mile inbound.

MISSED APPROACH: Climbing right turn to 2700 direct VV NDB and hold, continue climb-in-hold to 2700.

AWOS-3 124.525	ATLANTA APP CON ★ 132.475 291.1	GCO 121.725	UNICOM 122.8 (CTAF) 0
--------------------------	---	-----------------------	---------------------------------



SE-4, 10 JUL 2025 to 07 AUG 2025