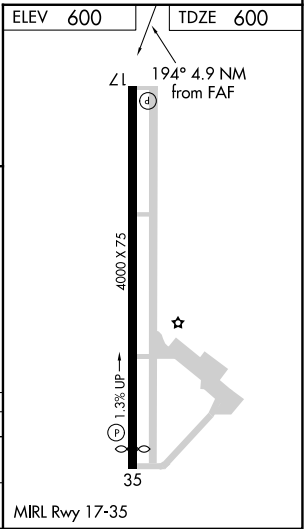
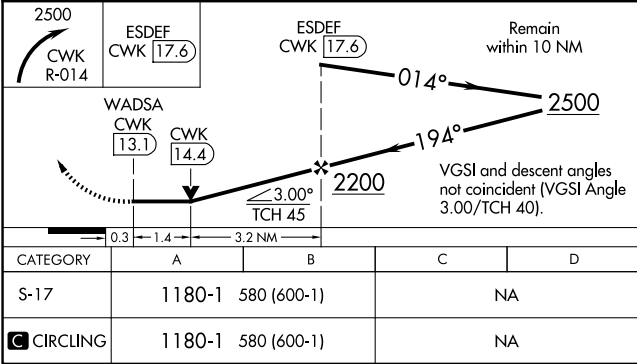
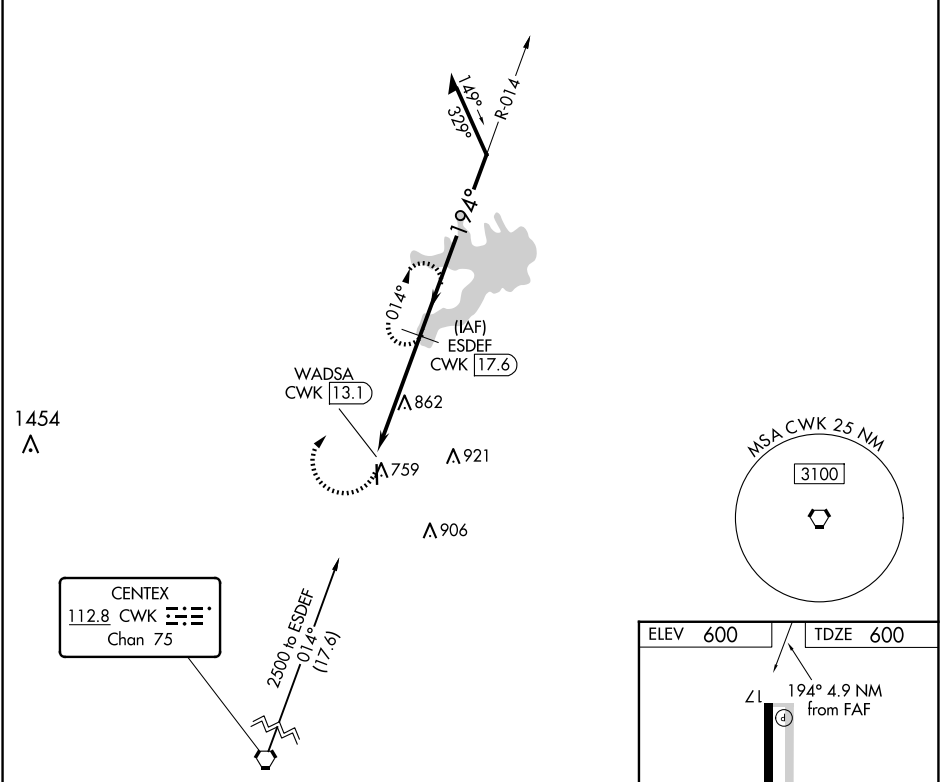


VORTAC CWK	APP CRS	Rwy Idg	4000
112.8	194°	TDZE	600
Chan 75		Apt Elev	600

VOR RWY 17
TAYLOR MUNI (T74)

DME required. <div><div>⚠</div><div>Circling Rwy 35 NA at night. Rwy 17 helicopter visibility reduction below ¾ SM NA. When local altimeter setting not received, use Austin Exec altimeter setting and increase all MDA 40 feet. VDP NA when using Austin Exec altimeter setting.</div></div>		MISSED APPROACH: Climbing right turn to 2500 on CWK VORTAC R-014 to ESDEF/17.6 DME and hold.
AWOS-3PT 119.75	AUSTIN APP CON 127.225 317.65	UNICOM 122.8 (CTAF)



SC-3, 10 JUL 2025 to 07 AUG 2025

SC-3, 10 JUL 2025 to 07 AUG 2025