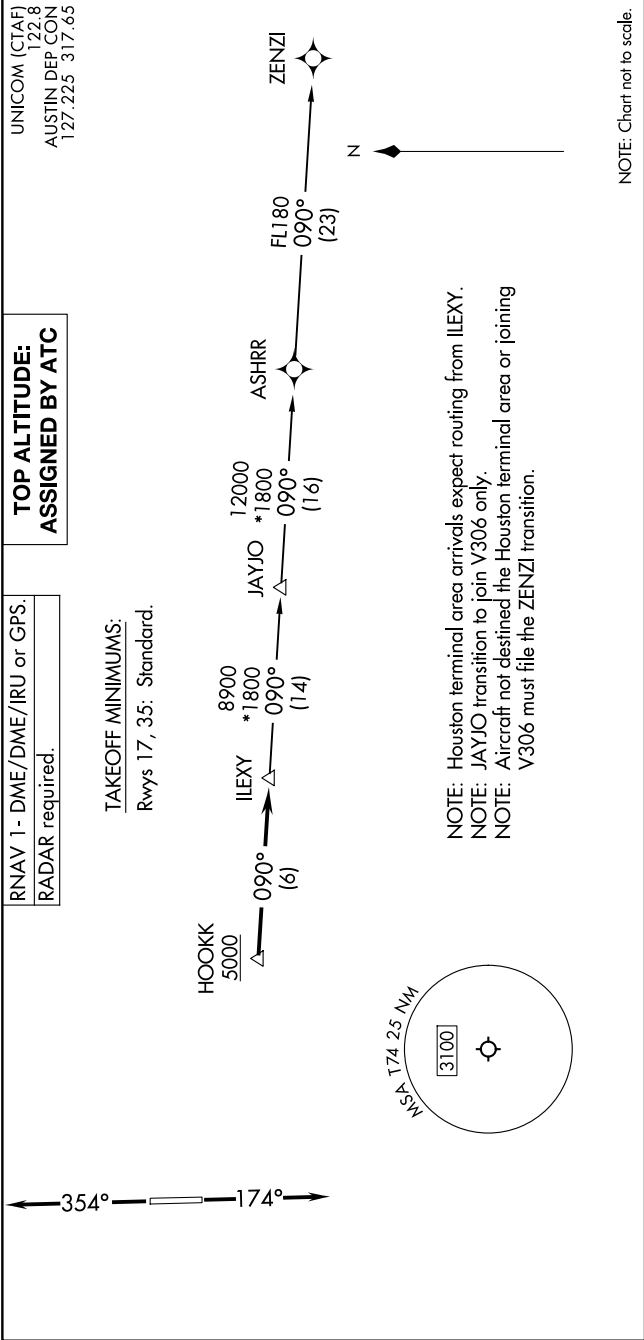


(ILEXY4.ILEXY) 23166  
ILEXY FOUR DEPARTURE (RNAV)

AL-6938 (FAA)

TAYLOR MUNI (T74)  
TAYLOR, TEXAS



DEPARTURE ROUTE DESCRIPTION

TAKEOFF RUNWAY 17: Climb on heading 174° or as assigned by ATC for vectors to cross HOOKK at or above 5000, thence, . . .  
TAKEOFF RUNWAY 35: Climb on heading 354° or as assigned by ATC for vectors to cross HOOKK at or above 5000, thence, . . .  
. . . on track 090° to ILEXY, then on transition. Maintain altitude assigned by ATC. Expect filed altitude 10 minutes after departure.

JAYJO TRANSITION (ILEXY4.JAYJO)  
ZENZI TRANSITION (ILEXY4.ZENZI)