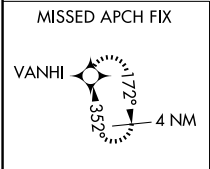
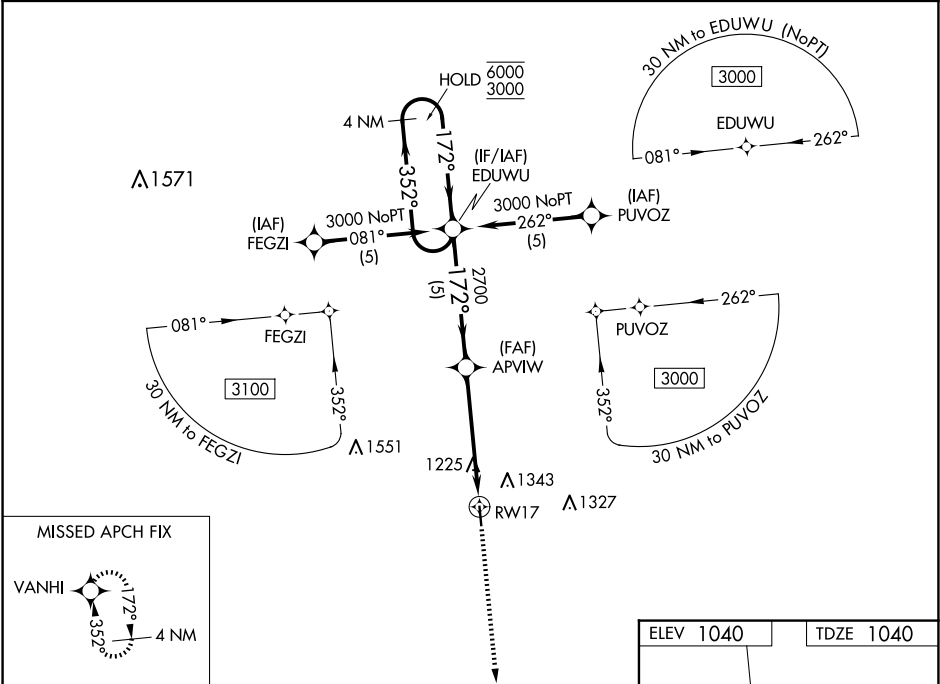


| | | |
|--|------------------------|---|
| WAAS CH 82017 W17A | APP CRS 172° | Rwy Idg TDZE 1040 Apt Elev 1040 |
|--|------------------------|---|

RNAV (GPS) RWY 17

CAMERON MEML (EZZ)

| | | | |
|---|--|---|---------------------------------|
| RNP APCH. | | MISSED APPROACH: Climb to 3000 direct VANHI and hold. | |
| ▼ Rwy 17 helicopter visibility reduction below ¾ SM NA. For uncompensated Baro-VNAV systems, LNAV/VNAV NA below -17°C or above 54°C. | | | |
| AWOS-3 121.05 | KANSAS CITY APP CON 118.4 307.35 | CLNC DEL 121.6 | UNICOM 122.8 (CTAF) 1 |



| | | | | | |
|----------------------|---------|--|---|------------|-------|
| 4 NM Holding Pattern | | VGSI and RNAV glidepath not coincident (VGSI Angle 3.00/TCH 21). | | 3000 | VANHI |
| EDUWU | | APVW | | ↑ | ✧ |
| 6000 3000 | | 2700 | | *LNAV only | |
| GP 3.00° TCH 40 | | *1.3 NM to RWY 17 | | RWY 17 | |
| 5 NM | | 3.7 NM | | 1.3 NM | |
| CATEGORY | A | B | C | D | |
| LPV DA | 1290-¾ | 250 (300-¾) | | NA | |
| LNAV/VNAV DA | 1518-1⅓ | 478 (500-1⅓) | | NA | |
| LNAV MDA | 1480-1 | 440 (500-1) | | NA | |
| CIRCLING | 1660-1 | 620 (700-1) | | NA | |

