

WAAS CH 99610 W33A	APP CRS 326°	Rwy Idg 5001 TDZE 10 Apt Elev 10
--	------------------------	---

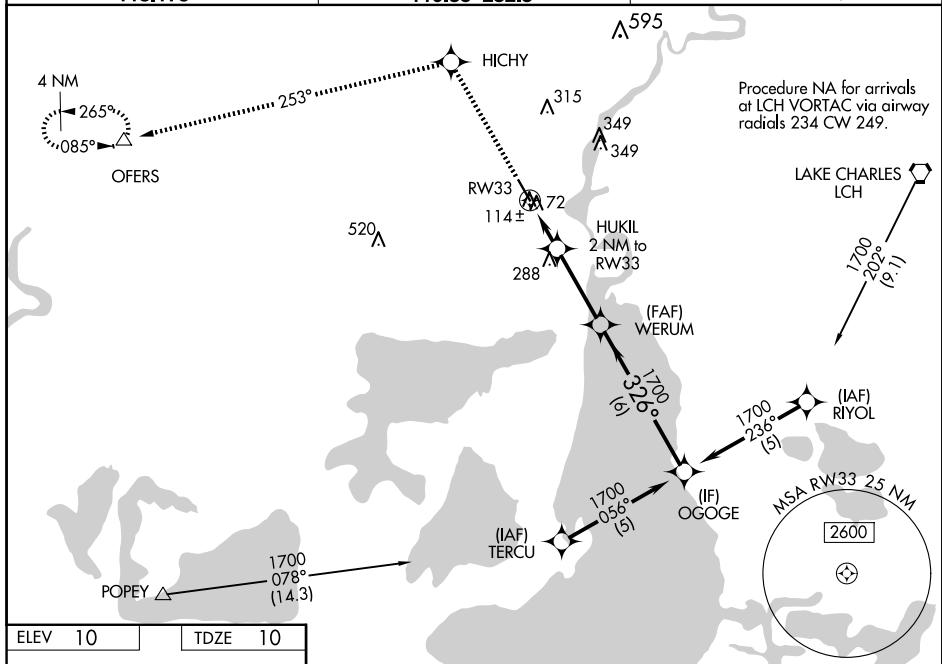
RNAV (GPS) RWY 33
SOUTHLAND FLD (U XL)

RNP APCH-GPS.

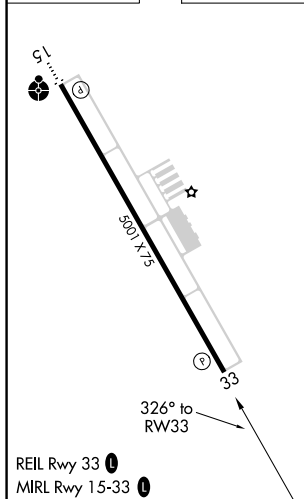
T Baro-VNAV NA when using Lake Charles Rgnl altimeter setting. For uncompensated Baro-VNAV systems, LNAV/VNAV NA below -15°C or above 49°C. Rwy 33 helicopter visibility reduction below $\frac{1}{2}$ SM NA. When local altimeter setting not received, use Lake Charles Rgnl altimeter setting and increase LPV DA to 367 feet; increase LNAV/VNAV DA to 403 feet and all visibilities $\frac{1}{4}$ SM; increase all MDAs 20 feet and Circling visibility Cat C/D $\frac{1}{4}$ SM.

MISSED APPROACH: Climb to 2500 direct HICHY and via 253° track to OFERS and hold.

AWOS-3PT 118.175	LAKE CHARLES APP CON ★ 119.35 282.3	UNICOM 122.8 (CTAF) 0
----------------------------	---	---------------------------------



ELEV	10		TDZE	10
------	----	--	------	----



The diagram illustrates the VGS1 RNAV glidepath. Key features include:

- Navigation Aids:** 2500 HCHY, tr 253°, OFERS, WERUM, OGOGE.
- Procedure:** Turn NA.
- *LNAV only**
- HUKIL:** 2 NM to RW33.
- RW33:** Indicated by a dashed arrow.
- Glidepath Angle:** 3.00° TCH 50.
- Distances:** 2 NM, 3.1 NM, 6 NM.
- Altitudes:** *680, 1700, GP 3.00° TCH 40.

CATEGORY	A	B	C	D
LPV DA		348-1¼	338 (400-1¼)	
LNAV/VNAV DA		384-1¼	374 (400-1¼)	
LNAV MDA		380-1	370 (400-1)	380-1¼ 370 (400-1¼)
CIRCLING	420-1 410 (500-1)	520-1 510 (600-1)	680-1¾ 670 (700-1¾)	680-2 670 (700-2)

RNAV (GPS) RWY 33