

WAAS CH <b>86711</b> <b>W15A</b>	APP CRS <b>146°</b>	Rwy Idg TDZE Apt Elev	<b>5001</b> <b>10</b> <b>10</b>
--	------------------------	-----------------------------	---------------------------------------

RNAV (GPS) RWY 15

SOUTHLAND FLD (UXL)

RNP APCH-GPS

▼

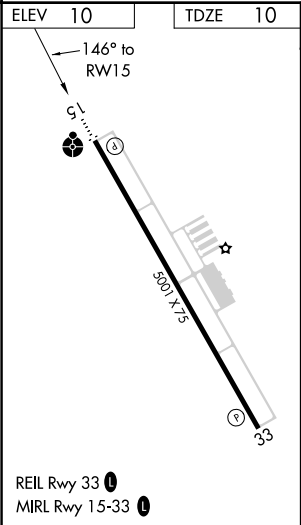
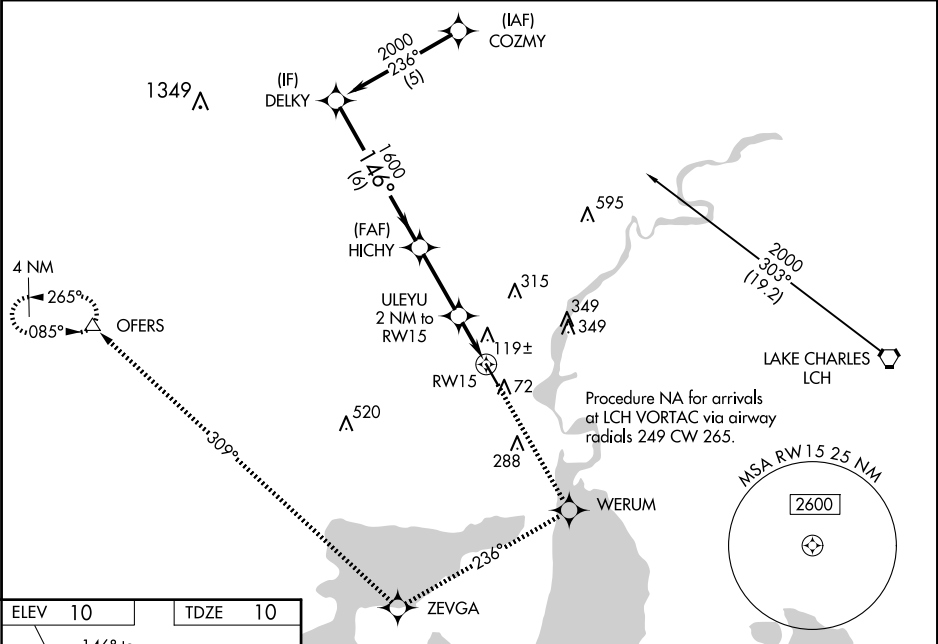
⚠

Inoperative table does not apply to LNAV/VNAV. Baro-VNAV NA when using Lake Charles Rgnl altimeter setting. For uncompensated Baro-VNAV systems, LNAV/VNAV NA below -15°C or above 48°C. Rwy 15 helicopter visibility reduction below ¾ SM NA. When local altimeter setting not received, use Lake Charles Rgnl altimeter setting and increase LPV DA to 328 feet and all visibilities ¼ SM; increase LNAV/VNAV DA to 438 feet; increase all MDAs 20 feet and Circling visibility Cat C/D ¼ SM. VDP NA when using Lake Charles Rgnl altimeter setting.

ODALS

MISSED APPROACH: Climb to 2500 direct WERUM and via 236° track to ZEVEGA and via 309° track to OFERS and hold.

AWOS-3PT <b>118.175</b>	LAKE CHARLES APP CON ★ <b>119.35 282.3</b>	UNICOM <b>122.8 (CTAF) 0</b>
----------------------------	---	---------------------------------



Procedure Turn NA		2500 ↑		WERUM ✱		tr 236°		ZEVEGA ✱		tr 309°		OFERS △	
DELKY		*LNAV only											
2000		HICHY											
GP 3.00° TCH 40		ULEYU 2 NM to RW15											
146°		*1.1 NM to RW15											
1600		RW15											
VGSi and RNAV glidepath not coincident (VGSi Angle 3.00/TCH 50).		*680											
6 NM		2.8 NM		0.9		1.1							
CATEGORY	A		B		C		D						
LPV DA			309-1		299 (300-1)								
LNAV/VNAV DA			419-1½		409 (500-1½)								
LNAV MDA	380-¾		370 (400-¾)						380-1¼ 370 (400-1¼)				
CIRCLING	420-1 410 (500-1)		520-1 510 (600-1)		680-1¾ 670 (700-1¾)		680-2 670 (700-2)						