

WAAS CH 99419 W01A	APP CRS 014°	Rwy Idg 5507 TDZE 495 Apt Elev 497
--	------------------------	---

RNAV (GPS) RWY 1

CARROLL COUNTY (HZD)

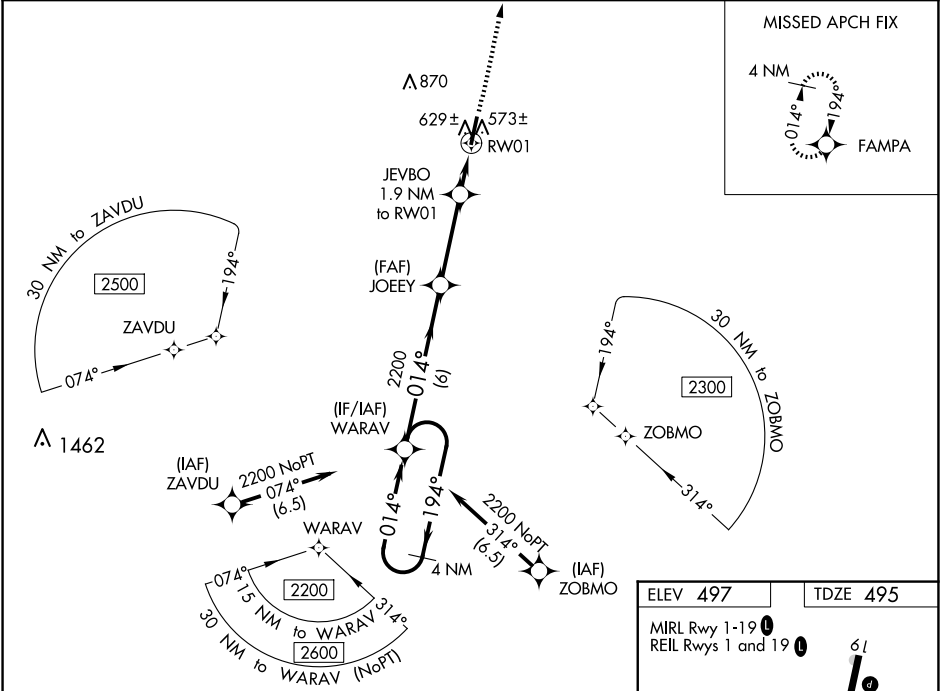
▼

▲ NA

For uncompensated Baro-VNAV systems, LNAV/VNAV NA below -15°C (5°F) or above 54°C (130°F). DME/DME RNP-0.3 NA. When local altimeter setting not received, use Jackson Rgnl altimeter setting and increase all DA 94 feet and all MDA 100 feet; increase LPV all Cats visibility ¼ mile, LNAV/VNAV all Cats visibility ⅜ mile, LNAV Cats C and D visibility ¼ mile, and Circling Cats C and D visibility ½ mile. VDP and Baro-VNAV NA with Jackson Rgnl altimeter setting. Helicopter visibility reduction below ⅜ SM NA.

MISSED APPROACH: Climb to 2200 direct FAMPA and hold.

AWOS-3 133.275	MEMPHIS CENTER 134.65 316.15	UNICOM 122.8 (CTAF) 0
--------------------------	--	---------------------------------



4 NM Holding Pattern		WARAV	JOEY	JEVBO	FAMPA
2200		2200	2200	2200	2200
GP 3.00° TCH 40		014°	014°	014°	014°
6 NM		3.3 NM	0.8 NM	1.1 NM	
CATEGORY	A	B	C	D	
LPV DA		745-7/8	250 (300-7/8)		
LNAV/VNAV DA		810-1	315 (400-1)		
LNAV MDA	880-1	385 (400-1)	880-1 1/8	385 (400-1 1/8)	
CIRCLING	980-1	483 (500-1)	1220-2 723 (800-2)	1220-2 1/4 723 (800-2 1/4)	

