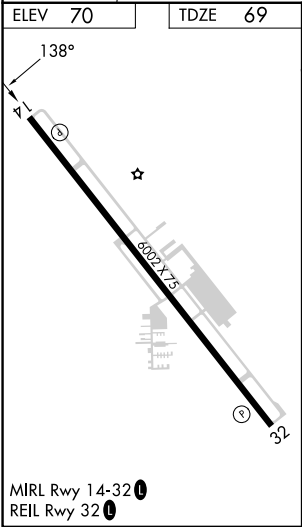
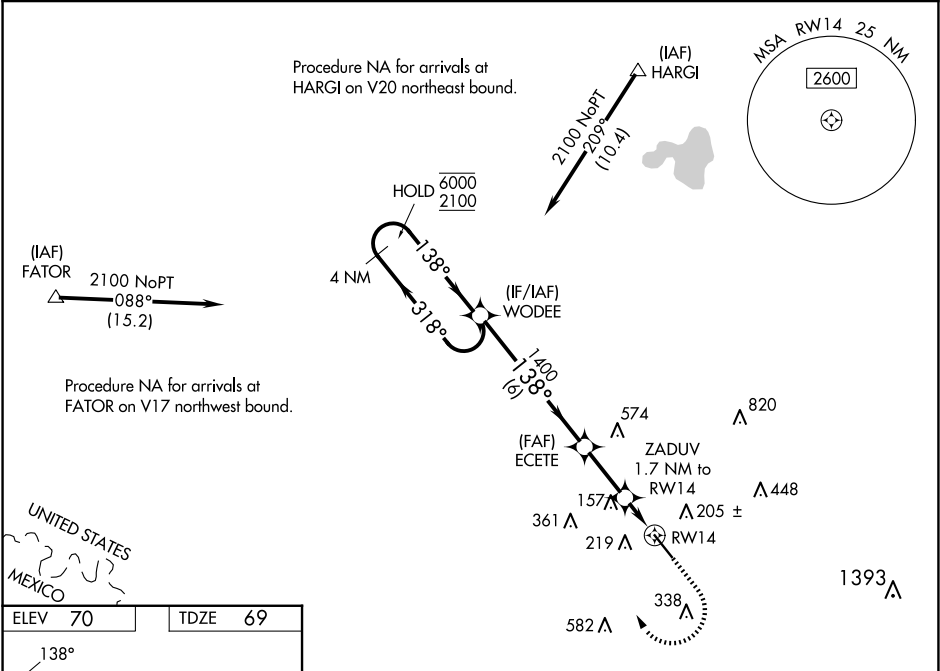


WAAS CH 70341 W14A	APP CRS 138°	Rwy Idg TDZE Apt Elev	6002 69 70
--	------------------------	-----------------------------	---------------------------------------

RNAV (GPS) RWY 14
MID VALLEY (TXW)

RNP APCH.		MISSED APPROACH: Climb to 900 then climbing right turn to 2100 direct WODEE and hold.	
Rwy 14 helicopter visibility reduction below ¾ SM NA. For uncompensated Baro-VNAV systems, LNAV/VNAV NA below -15°C or above 54°C.			
AWOS-3PT 118.575	VALLEY APP CON 126.55 377.2	CLNC DEL 125.95	UNICOM 122.8 (CTAF) 0



4 NM Holding Pattern		WODEE	900	2100	WODEE
6000 2100		318° 138°	1400	ZADUV 1.7 NM to RWY14	*LNAV only.
GP 3.00° TCH 50		1400	*660	*0.9 NM to RWY14	RWY14
		6 NM	2.3 NM	0.8 NM	0.9 NM
CATEGORY	A	B	C	D	
LPV DA	319-¾ 250 (300-¾)				
LNAV/VNAV DA	331-⅞ 262 (300-⅞)				
LNAV MDA	420-1 351 (400-1)				
CIRCLING	620-1	550 (600-1)	700-1¾ 630 (700-1¾)	940-2¾ 870 (900-2¾)	

SC-3, 10 JUL 2025 to 07 AUG 2025

SC-3, 10 JUL 2025 to 07 AUG 2025