

WAAS CH 97430 W13A	APP CRS 129°	Rwy Idg 3700 TDZE 80 Apt Elev 80
--	------------------------	---

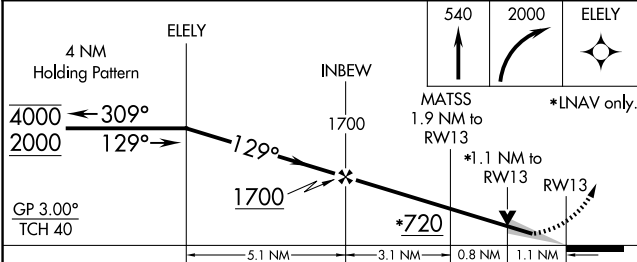
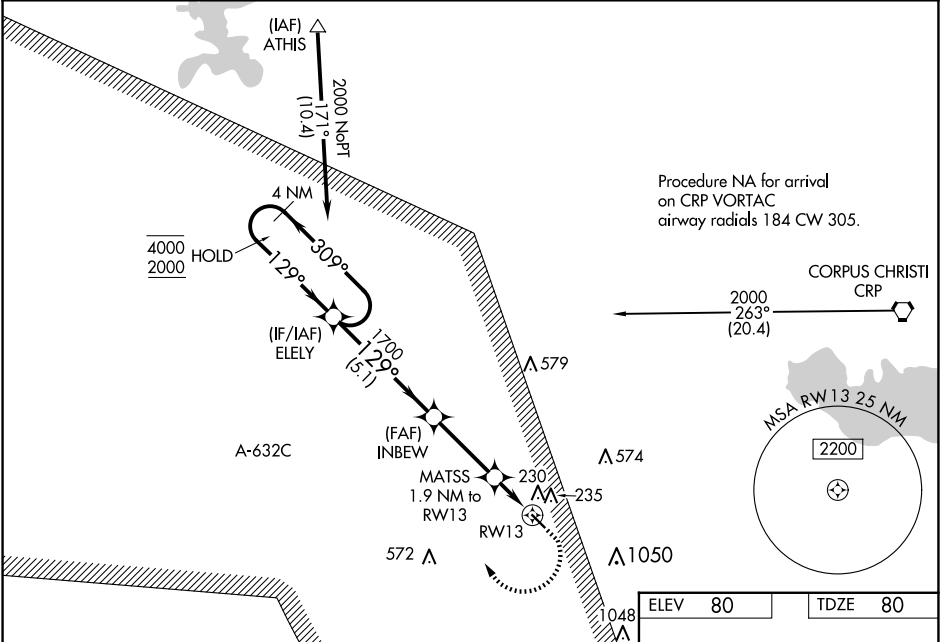
RNAV (GPS) RWY 13
NUECES COUNTY (RBO)

RNP APCH.

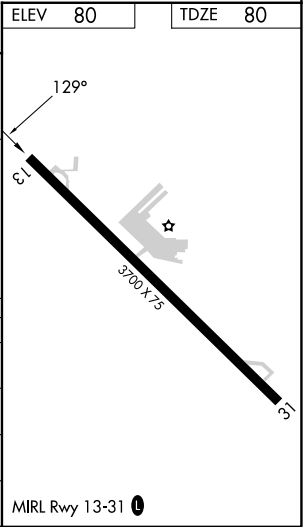
⚠ Circling NA northeast of Rwy 13-31. Procedure NA at night. Baro-VNAV and VDP NA when using Corpus Christi Intl altimeter setting. For uncompensated Baro-VNAV systems, LNAV/VNAV NA below -15°C or above 54°C. When local altimeter setting not received, use Corpus Christi Intl altimeter setting and increase LPV DA to 358 feet, LNAV/VNAV DA to 400 feet and all MDA 40 feet.

MISSED APPROACH: Climb to 540 then climbing right turn to 2000 direct ELEY and hold.

AWOS-3 118.175	KINGSVILLE APP CON ★ 119.9 290.45	CTAF 122.9	122.8 0
--------------------------	---	----------------------	----------------



CATEGORY	A	B	C	D
LPV DA	330-1	250 (300-1)		NA
LNNAV/VNAV DA	372-1	292 (300-1)		NA
LNNAV MDA	480-1	400 (400-1)		NA
CIRCLING	540-1 460 (500-1)	640-1 560 (600-1)		NA



SC-3, 10 JUL 2025 to 07 AUG 2025

SC-3, 10 JUL 2025 to 07 AUG 2025