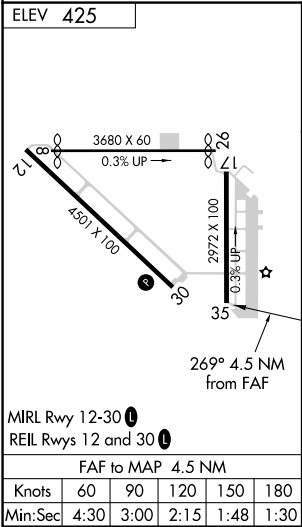
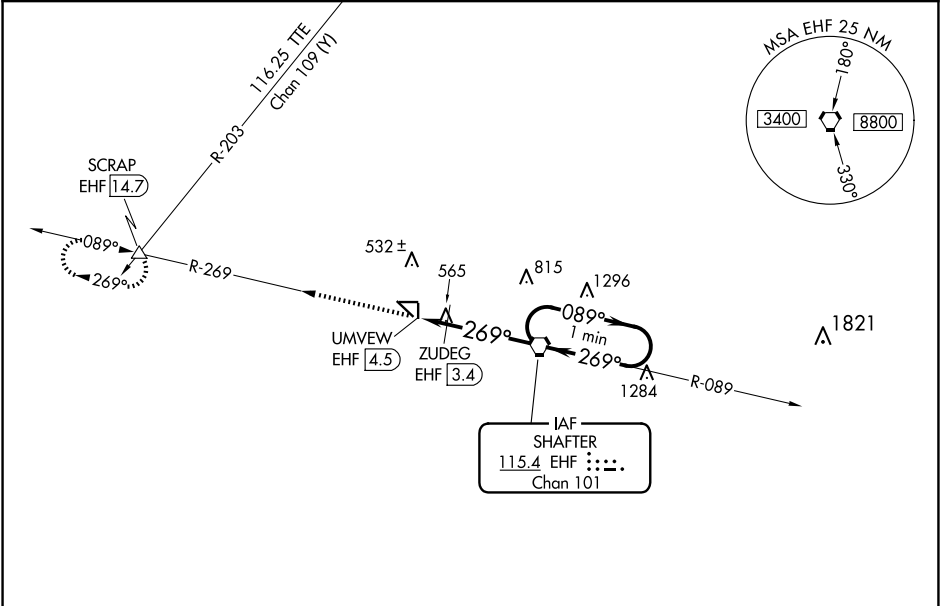


VORTAC EHF <b>115.4</b> Chan <b>101</b>	APP CRS <b>269°</b>	Rwy Idg TDZE Apt Elev <b>425</b>	<b>N/A</b> <b>N/A</b> <b>425</b>
---	------------------------	---	--

VOR-A  
SHAFTER-MINTER FLD (MIT)

<b>NA</b> Circling to Rwy 17, 35, 8 and 26 NA at night. When local altimeter setting not received, use Bakersfield altimeter setting and increase all MDAS 40 feet and increase Cat C visibility to 1¾.	MISSED APPROACH: Climb to 4000 on EHF VORTAC R-269 to SCRAP INT/EHF 14.7 DME and hold, continue climb-in-hold to 4000.
--	--

AWOS-3 <b>121.125</b>	BAKERSFIELD APP CON * <b>126.45 270.3</b>	CTAF <b>122.9</b>
--------------------------	--	----------------------



4000	SCRAP	One Minute Holding Pattern			
EHF R-269	ZUDEG EHF 3.4	EHF VORTAC	089°	2900	
UMVEW EHF 4.5	269°	2600	269°		
*1040 when using Bakersfield altimeter setting.					
CATEGORY A B C D					
CIRCLING 1000-1 575 (600-1) 1000-1½ 575 (600-1½) NA					
ZUDEG FIX MINIMUMS					
CIRCLING 900-1 475 (500-1) 940-1½ 515 (600-1½) NA					

SW-3, 10 JUL 2025 to 07 AUG 2025

SW-3, 10 JUL 2025 to 07 AUG 2025