

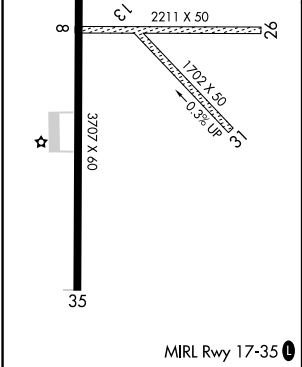
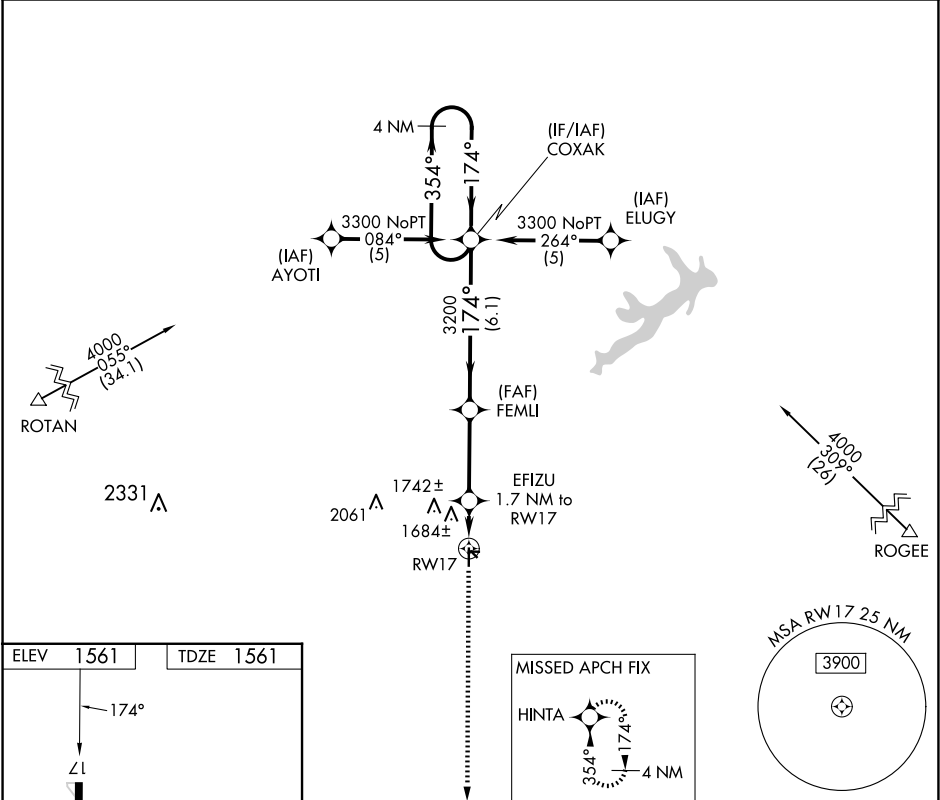
APP CRS	Rwy Idg	3707
174°	TDZE	1561
	Apt Elev	1561

RNAV (GPS) RWY 17

ARLEDGE FLD (F56)

RNP APCH-GPS.	Procedure NA at night. Use Abilene Rgnl altimeter setting; when not received use Breckenridge altimeter setting and increase all MDAs 40 feet. Rwy 17 helicopter visibility reduction below NA 1 SM NA. Circling NA to Rwy 8/26 and 13/31.	MISSED APPROACH: Climb to 3300 direct HINTA and hold.
---------------	---	---

ABILENE APP CON	UNICOM
127.2 282.3	122.8 (CTAF) 0



3300	HINTA	FEMLI	COXAK	4 NM Holding Pattern
↑	✦	✦	✦	✦
EFIZU 1.7 NM to RW17	3200	3200	3300	3300
174°	174°	174°	174°	174°
1.7 NM	3.3 NM	6.1 NM		
CATEGORY	A	B	C	D
LNAV MDA	2040-1	479 (500-1)	2040-1 3/8 479 (500-1 3/8)	NA
CIRCLING	2100-1 539 (600-1)	2200-1 639 (700-1)	2220-1 3/4 659 (700-1 3/4)	NA

SC-2, 10 JUL 2025 to 07 AUG 2025

SC-2, 10 JUL 2025 to 07 AUG 2025