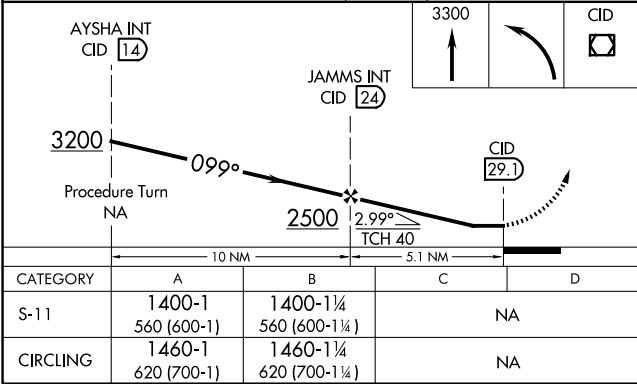
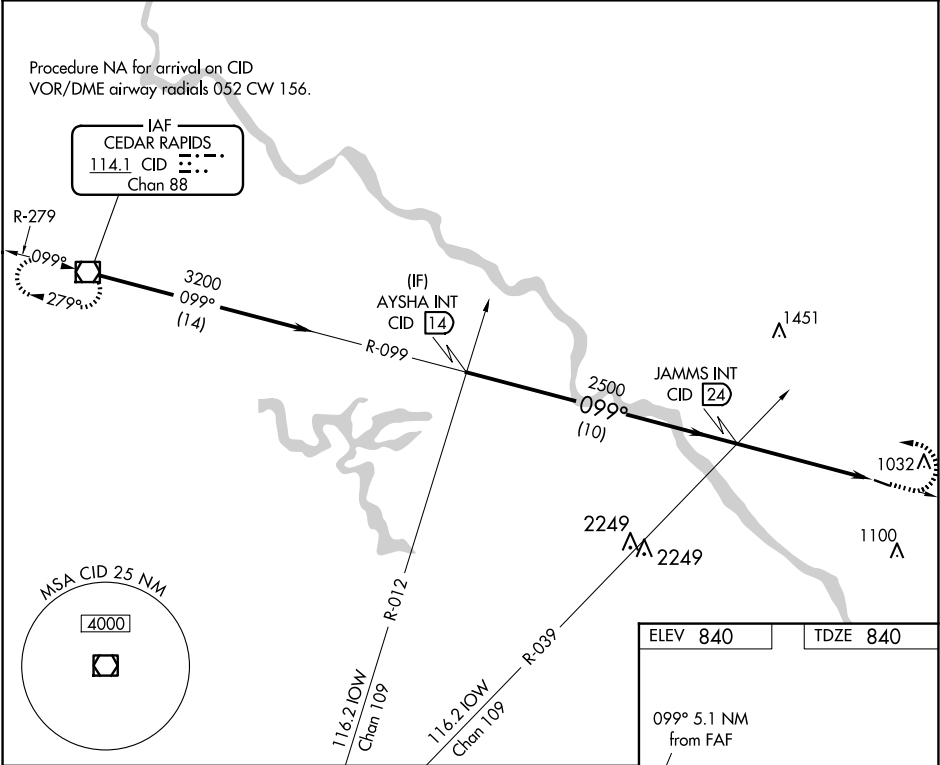


VOR/DME CID	APP CRS	Rwy Idg	3000
114.1	099°	TDZE	840
Chan 88		Apt Elev	840

VOR RWY 11
MATHEWS MEML (8C4)

<p>T Use Iowa City altimeter setting, when not received</p> <p>A NA use Cedar Rapids altimeter setting.</p>	<p>MISSED APPROACH: Climb to 3300 then left turn direct CID VOR/DME and hold.</p>
<p>CEDAR RAPIDS APP CON ★</p> <p>119.7 266.8</p>	<p>CTAF</p> <p>122.9</p>



ELEV 840	TDZE 840
099° 5.1 NM from FAF	
3000 X 60	
MIRL Rwy 11-29 REIL Rwy 11	
FAF to MAP 5.1 NM	
Knots	60 90 120 150 180
Min:Sec	5:06 3:24 2:33 2:02 1:42