

WAAS CH 53420 W24A	APP CRS 241°	Rwy ldg TDZE Apt Elev	8120 6771 6814
--	------------------------	-----------------------------	---

RNAV (GPS) RWY 24

SIERRA BLANCA RGNL (SRR)

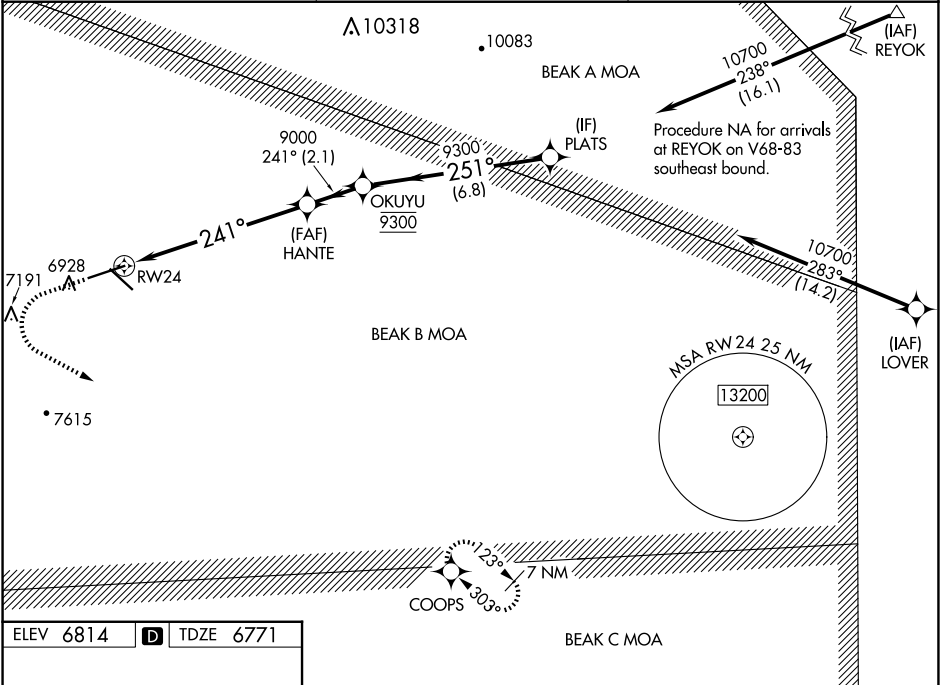
RNP APCH - GPS.

⚠

When local altimeter setting not received, procedure NA.
For uncompensated Baro-VNAV systems, LNAV/VNAV NA
below -28°C or above 54°C. Circling Rwy 12 NA at night.

MISSED APPROACH: Climb to 7500 then climbing
left turn to 10000 direct COOPS and hold.

AWOS-3 126.475	ALBUQUERQUE CENTER 132.65 257.6	UNICOM 122.8 (CTAF) 0
--------------------------	---	---------------------------------



ELEV 6814	D	TDZE 6771
------------------	----------	------------------

7500

10000

COOPS

↑

↶

✦

241°

251°

238°

283°

23°

303°

1.9 NM

5.1 NM

2.1 NM

6.8 NM

8120 x 100

0.7% DOWN

0.5% UP

6300 x 75

0.8% UP

REIL Rwy 12 and 30

MIRL Rwy 6-24 and 12-30

CATEGORY	A	B	C	D
LPV DA	6971- ³ / ₄	200 (200- ³ / ₄)		
LNAV/VNAV DA	7220-1 ³ / ₈	449 (500-1 ³ / ₈)		
LNAV MDA	7380-1	609 (600-1)	7380-1 ³ / ₄	609 (600-1 ³ / ₄)
CIRCLING	7380-1	566 (600-1)	7600-2 ¹ / ₄ 786 (800-2 ¹ / ₄)	7860-3 1046 (1100-3)