

WAAS CH <b>82621</b> <b>W09A</b>	APP CRS <b>096°</b>	Rwy Ldg TDZE <b>6911</b> <b>9038</b> Apt Elev <b>9070</b>
--	------------------------	--

RNAV (GPS) Y RWY 9

TELLURIDE RGNL (TEX)

⚠

⚠

⚠

-17°C

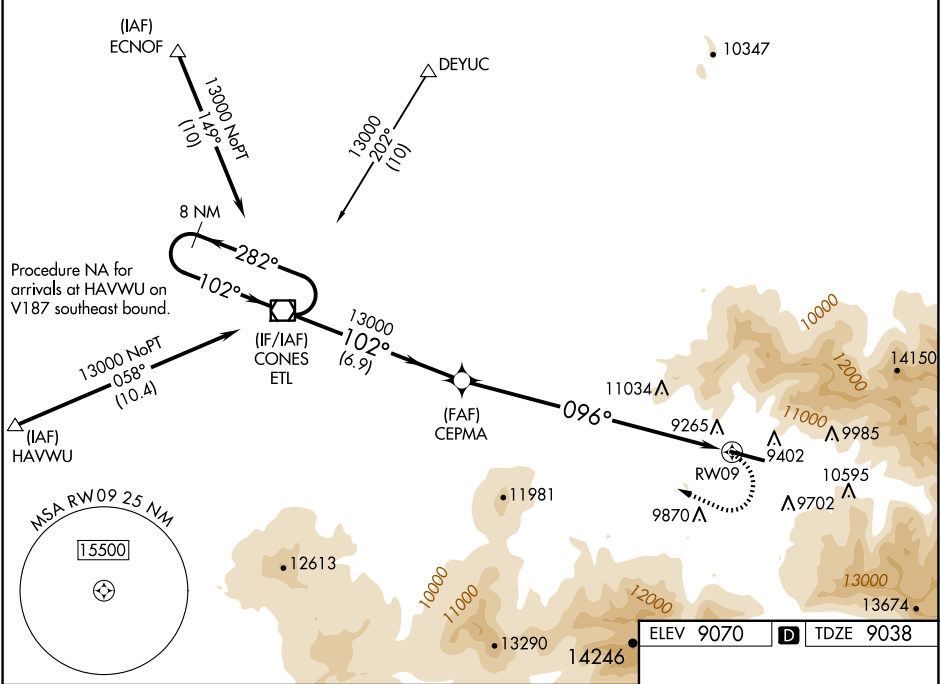
Circling NA at night. When local altimeter setting not received, procedure NA.

Circling NA north of Rwy 9-27. DME/DME RNP-0.3 NA.

# Missed approach requires a minimum climb of 380 feet per NM to 12500.

MISSED APPROACH: Climbing right turn to 15000 direct ETL VOR/DME and hold, continue climb-in-hold to 15000.

AWOS-3 <b>118.325</b>	DENVER CENTER <b>125.35 354.05</b>	UNICOM <b>123.0 (CTAF) 0</b>
--------------------------	---------------------------------------	---------------------------------



8 NM Holding Pattern		ETL VOR/DME	CEPMA	15000 ETL	*LNAV only.
13000 ← 282°		102° →	13000	096°	
6.9 NM		3.7 NM	6.3 NM	RW09	
CATEGORY		A	B	C	D
LP MDA	11500-1¼ 2462 (2500-1¼)	11500-1½ 2462 (2500-1½)	NA		
LNAV MDA#	11900-1¼ 2862 (2900-1¼)	11900-1½ 2862 (2900-1½)	NA		
LNAV MDA	12140-1¼ 3102 (3100-1¼)	12140-1½ 3102 (3100-1½)	NA		
CIRCLING	12140-1¼ 3070 (3100-1¼)	12140-1½ 3070 (3100-1½)	NA		

HIRL Rwy 9-27 0

REIL Rwys 9 and 27 0