

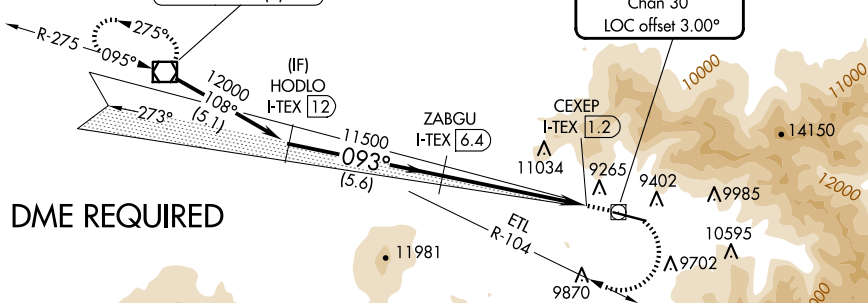
LOC RWY 9
TELLURIDE RGNL (TEX)

MISSED APPROACH: Climb to 11800 then climbing right turn to 13500 on ETL R-104 to ETL VOR/DME and hold.

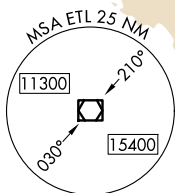
AWOS-3 118.325	DENVER CENTER 125.35 354.05	UNICOM 123.0 (CTAF) 0
--------------------------	---------------------------------------	---------------------------------

IAF
CONES
116.95 ETL $\dot{\bar{z}}$
Chan 116(Y)

LOCALIZER .. 109.3
I-TEX ::...
Chan 30
LOC offset 3.00°

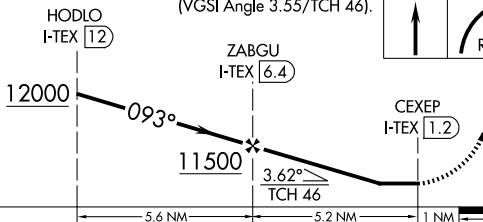
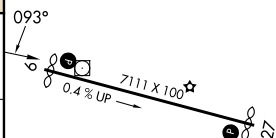
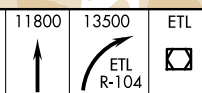


DME REQUIRED



ELEV 9070	D	TDZE 9037
-----------	----------	-----------

VGSI and descent angles not coincident
(VGSI Angle 3.55/TCH 46).



CATEGORY	A	B	C	D
S-9	11340-1¼ 2303 (2300-1¼)	11340-1½ 2303 (2300-1½)		NA
C CIRCLING	11340-1¼ 2270 (2300-1¼)	11340-1½ 2270 (2300-1½)		NA

HIRL Rwy 9-27 **L**
REIL Rwys 9 and 27 **L**