

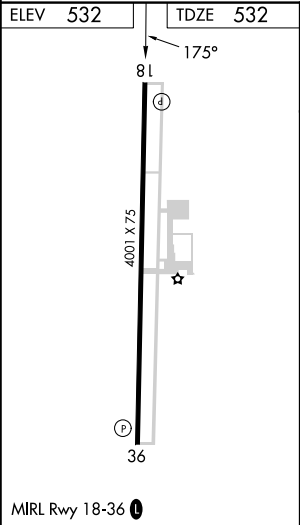
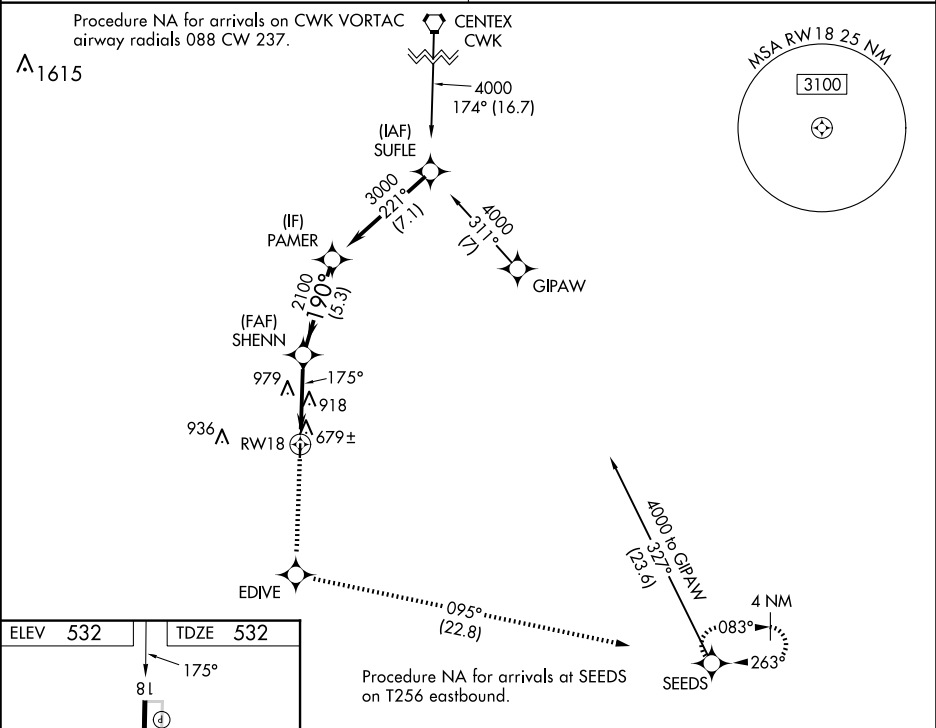
WAAS CH 45922 W18A	APP CRS 175°	Rwy Idg TDZE Apt Elev	4001 532 532
--	------------------------	-----------------------------	---

RNAV (GPS) RWY 18

LOCKHART MUNI (50R)

RNP APCH.	MISSED APPROACH: Climb to 4000 direct EDIVE and on track 095° to SEEDS and hold.
<div><div>▼</div><div>▲ NA</div></div> Baro-VNAV NA. Use San Marcos altimeter setting, when not received, use Austin-Bergstrom Intl altimeter setting and increase all DA 16 feet, all MDA 20 feet; increase LNAV Cat B visibility ¼ SM.	

AUSTIN APP CON 120.875 270.25	UNICOM 122.8 (CTAF) 0
---	---------------------------------



4000	EDIVE	tr 095°	SEEDS	VGSI and RNAV glidepath not coincident (VGSI Angle 3.50/TCH 24).
				SHENN 2100 190° 2100 175° 3000
				GP 3.00° TCH 40
				4.8 NM 5.3 NM
CATEGORY	A	B	C	D
LPV DA	815-1 283 (300-1)			NA
LNAV/VNAV DA	883-1¼ 351 (400-1¼)			NA
LNAV MDA	1260-1 728 (800-1)		1260-2 728 (800-2)	NA