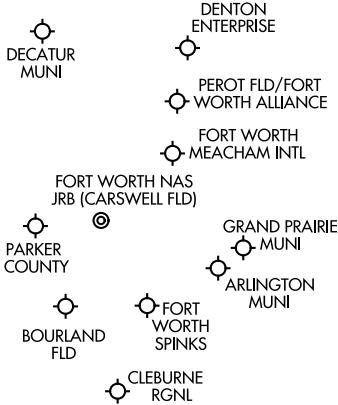
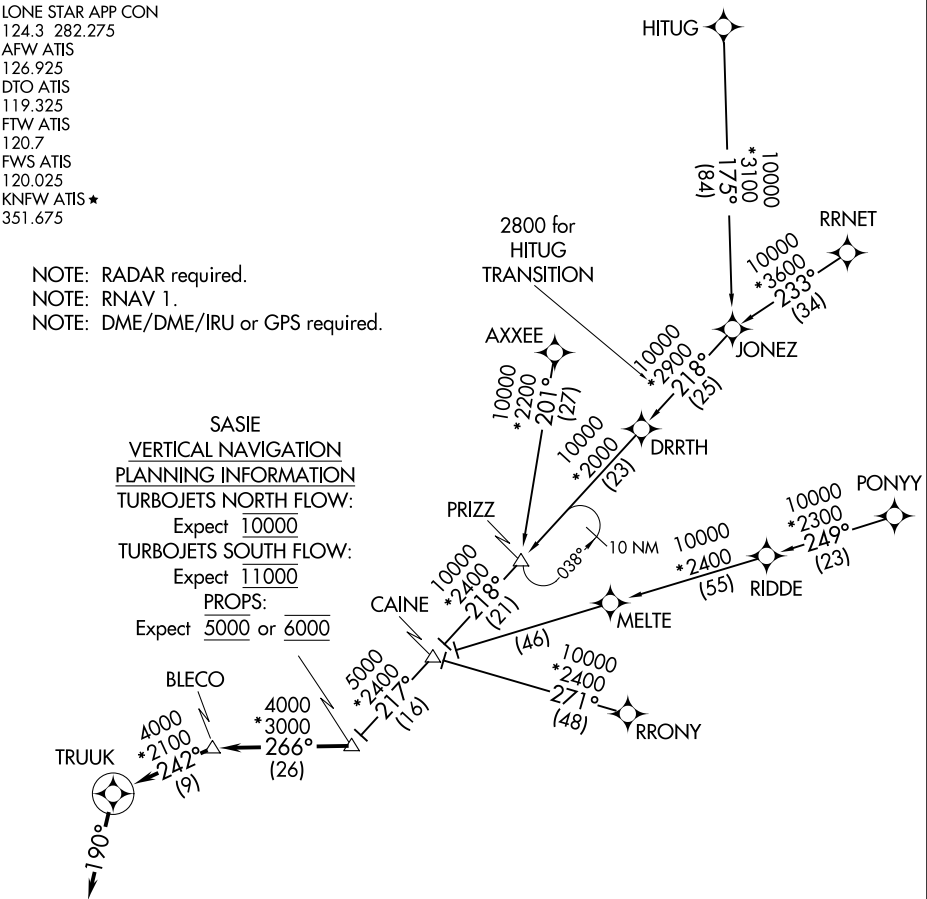


LONE STAR APP CON  
124.3 282.275  
AFW ATIS  
126.925  
DTO ATIS  
119.325  
FTW ATIS  
120.7  
FWS ATIS  
120.025  
KNFW ATIS ★  
351.675

NOTE: RADAR required.  
NOTE: RNAV 1.  
NOTE: DME/DME/IRU or GPS required.

SASIE  
VERTICAL NAVIGATION  
PLANNING INFORMATION  
TURBOJETS NORTH FLOW:  
Expect 10000  
TURBOJETS SOUTH FLOW:  
Expect 11000  
PROPS:  
Expect 5000 or 6000



NOTE: Chart not to scale.

ARRIVAL ROUTE DESCRIPTION

AXxee TRANSITION (AXxee.TRUUK2): (For aircraft filing FL230 and below).  
HITUG TRANSITION (HITUG.TRUUK2)  
PONY TRANSITION (PONY.TRUUK2)  
RRNET TRANSITION (RRNET.TRUUK2)  
RRONY TRANSITION (RRONY.TRUUK2): (For aircraft filing FL230 and below).

From SASIE on track 266° to BLECO, then on track 242° to TRUUK, then on track 190°. Expect RADAR vectors to final approach course.