

WAAS CH 82324 W34A	APP CRS 346°	Rwy Ldg 11000 TDZE 681 Apt Elev 723
--	------------------------	--

RNAV (GPS) RWY 34R

PEROT FLD/FORT WORTH ALLIANCE (AFW)

T For uncompensated Baro-VNAV systems, LNAV/VNAV NA below -8°C (18°F) or above 54°C (130°F). Circling NA east of Rwy 16L-34R. DME/DME RNP-0.3 NA.

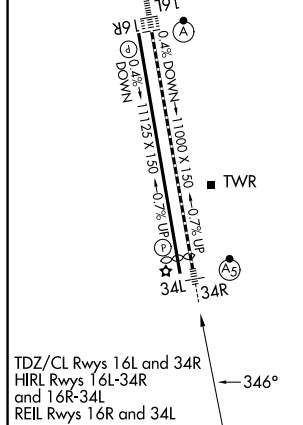
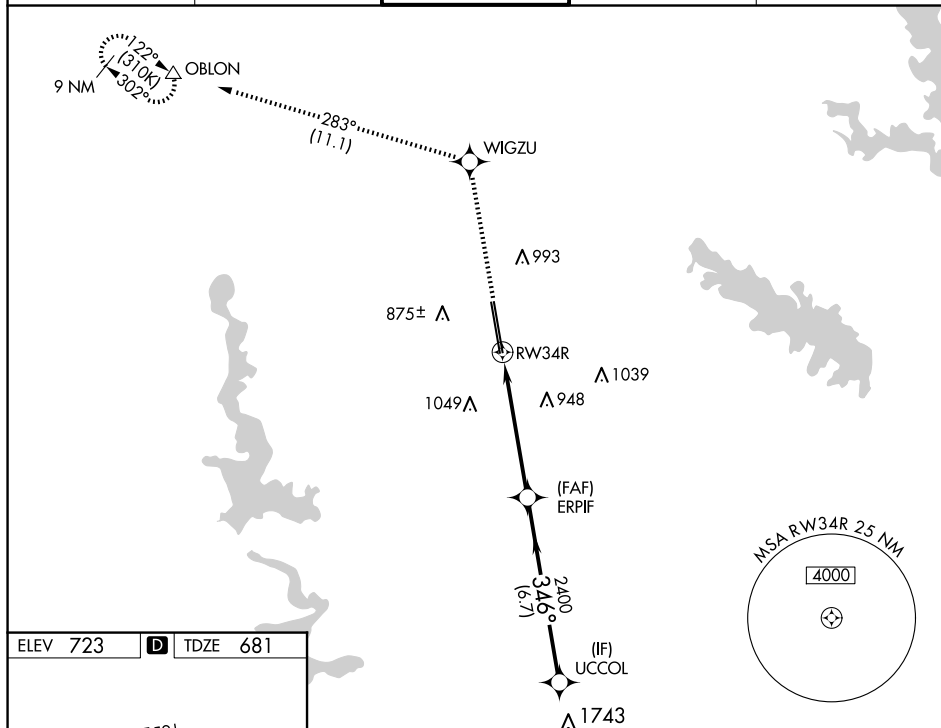
A For inop ALS, increase LPV Cat E visibility to RVR 4000, increase LNAV/VNAV all Cats visibility to 2 SM, increase LNAV Cat E visibility to 1% SM.

MALS



MISSED APPROACH: Climb to 3000 direct WIGZU and on track 283° to OBLON and hold.

ATIS 126.925	LONE STAR APP CON 118.1 306.95	ALLIANCE TOWER 135.15 257.9	GND CON 132.65 306.2	CLNC DEL 128.725
-----------------	-----------------------------------	--------------------------------	-------------------------	---------------------



3000 ↑	WIGZU ✦	tr 283° △	OBLON				
*LNAV only.		*1.6 NM to RW34R		ERPIF 2400	UCCOL 3000		GP 3.00° TCH 58
RW34R		1.6 NM		3.7 NM		6.7 NM	
CATEGORY	A	B	C	D	E		
LPV DA	881/18		200 (200-½)				
LNAV/ VNAV DA	1437-1¾		756 (800-1¾)				
LNAV MDA	1240/24	559 (600-½)	1240/60		559 (600-1¼)		
C CIRCLING	1240-1 517 (600-1)	1320-1 597 (600-1)	1360-1¾ 637 (700-1¾)	1380-2 657 (700-2)	1380-2¼ 657 (700-2¼)		