

FORT WORTH, TEXAS

AL-6918 (FAA)

25163

LOC/DME I-UEP 110.15 Chan 38 (Y)	APP CRS 166°	Rwy Ldg 10600 TDZE 723 Apt Elev 723
--	------------------------	--

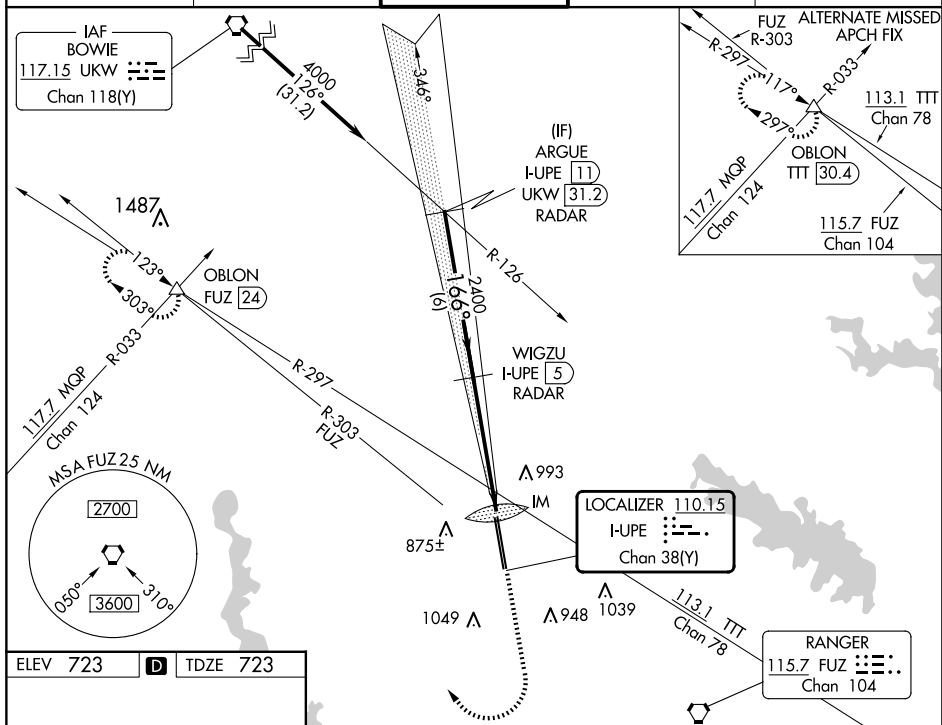
ILS RWY 16L (CAT II & III)
PEROT FLD/FORT WORTH ALLIANCE (AFW)

DME or RADAR required.

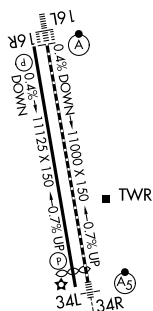


MISSED APPROACH: Climb to 1200 then climbing right turn to 3000 on heading 330° and FUZ VORTAC R-303 to OBLON INT/FUZ 24 DME and hold.

ATIS 126.925	LONE STAR APP CON 118.1 306.95	ALLIANCE TOWER 135.15 257.9	GND CON 132.65 306.2	CLNC DEL 128.725
-----------------	-----------------------------------	--------------------------------	-------------------------	---------------------



ELEV 723	D	TDZE 723
----------	----------	----------



TDZ/CL Rwy 16L and 34R
HIRL Rwy 16L-34R and 16R-34L
REIL Rwy 16R and 34L

ARGUE I-UPE 11 RADAR

WIGZU I-UPE 5 RADAR

1200

3000

hdg 330°

FUZ R-303

OBLON

4000

166°

2400

2400

IM 767

GS 3.00° TCH 55

6 NM

5.1 NM

104.9

CATEGORY	A	B	C	D
S-ILS 16L	CAT II RA 101/12 100 DA 823			
S-ILS 16L	CAT III RVR 06			

CATEGORY II & III ILS - SPECIAL AIRCREW
& AIRCRAFT CERTIFICATION REQUIRED

FORT WORTH, TEXAS
Amdt 8A 21MAR24

32°59'N-97°19'W

PEROT FLD/FORT WORTH ALLIANCE (AFW)
ILS RWY 16L (CAT II & III)