

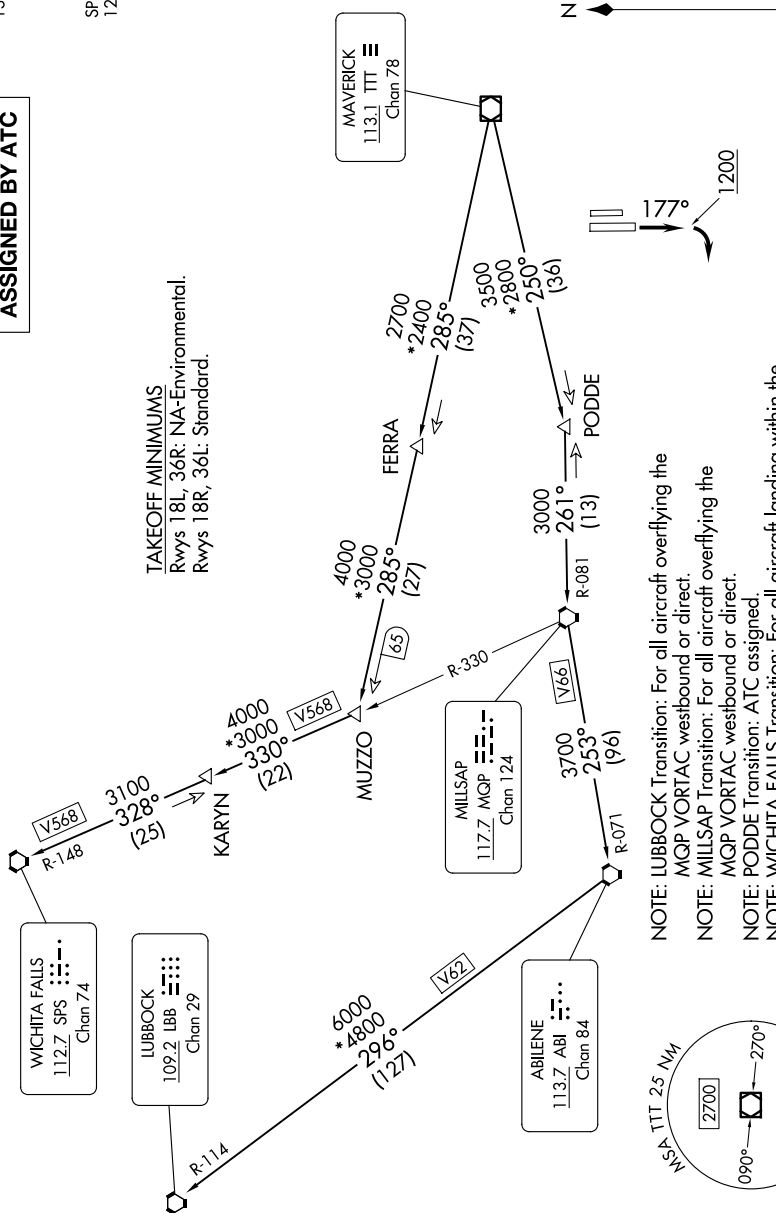
KINGDOM FIVE DEPARTURE

**TOP ALTITUDE:
ASSIGNED BY ATC**

RADAR and DME required.

LONE STAR DEP CON
135.975 379.9
ATIS
120.025
GND CON
119.475
SPINKS TOWER ★
124.625 (CTAF)

TAKEOFF MINIMUMS
Rwys 18L, 36R: NA-Environmental.
Rwys 18R, 36L: Standard.



NOTE: LUBBOCK Transition: For all aircraft overflying the MQP VORTAC westbound or direct.
NOTE: MILLSAP Transition: For all aircraft overflying the MQP VORTAC westbound or direct.
NOTE: PODDE Transition: ATC assigned.
NOTE: WICHITA FALLS Transition: For all aircraft landing Wichita Falls terminal area or overflying the SPS VORTAC.
NOTE: For all aircraft requesting 17000 and below.

NOTE: Chart not to scale.

(CONTINUED ON FOLLOWING PAGE)