

LOC I-JZW 110.95	APP CRS 357°	Rwy Idg TDZE Apt Elev 6002 697 700
----------------------------	------------------------	--

ILS or LOC RWY 36L

FORT WORTH SPINKS (FWS)

RADAR required for procedure entry.

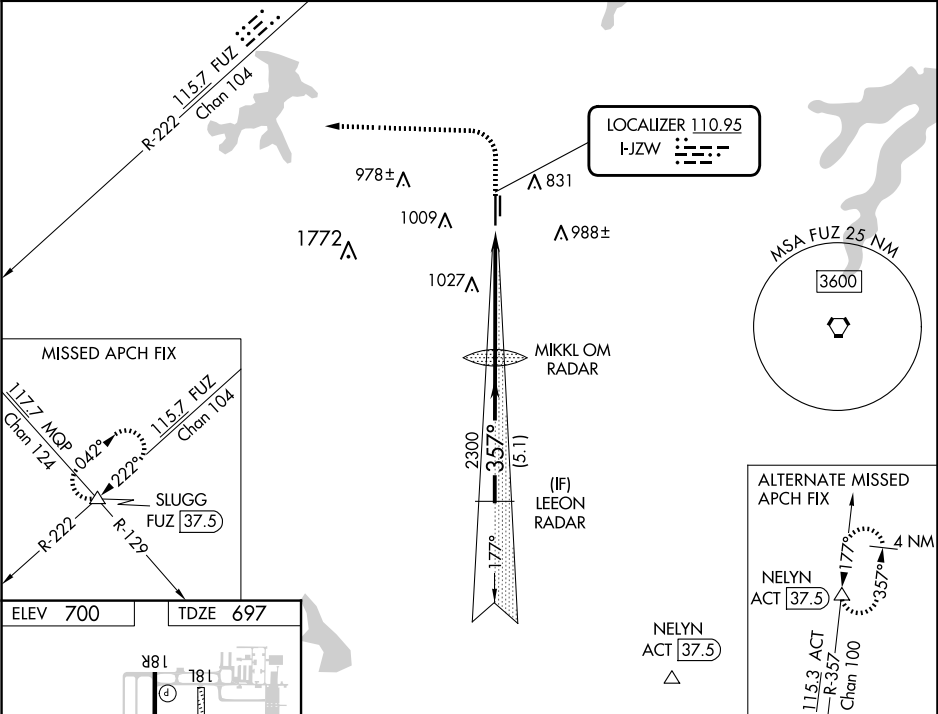
MALSR

MISSED APPROACH: Climb to 1800 then climbing left turn to 3100 on heading 269° and FUZ VORTAC R-222 to SLUGG INT/ FUZ 37.5 DME and hold.

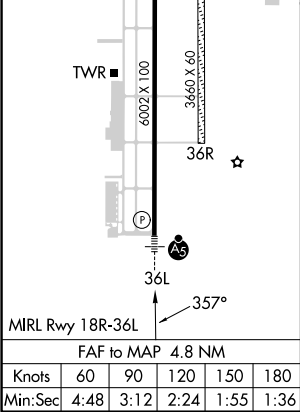
NA

Circling NA west of Rwy 18R-36L. For inop ALS increase S-LOC 36L Cat C/D visibility to 1¼ SM.

ATIS 120.025	LONE STAR APP CON 135.975 379.9	SPINKS TOWER ★ 124.625 (CTAF)	GND CON 119.475	UNICOM 122.7
------------------------	---	---	---------------------------	------------------------



ELEV 700	TDZE 697
----------	----------



1800	3100	FUZ R-222	SLUGG	MIKKL OM RADAR	LEEON RADAR
hdg 269°				2278	2300
				357°	2300
				4.8 NM	5.1 NM
CATEGORY	A	B	C	D	
S-ILS 36L	897-½ 200 (200-½)				
S-LOC 36L	1320-½ 623 (700-½)		1320-1¾ 623 (700-1¾)		
CIRCLING	1320-1 620 (700-1)		1340-1¾ 640 (700-1¾)		1340-2 640 (700-2)