

WAAS CH 86702 W16A	APP CRS 163°	Rwy ldg TDZE 16 Apt Elev 16
--	------------------------	---

RNAV (GPS) RWY 16

EMMONAK (ENM) (PAEM)

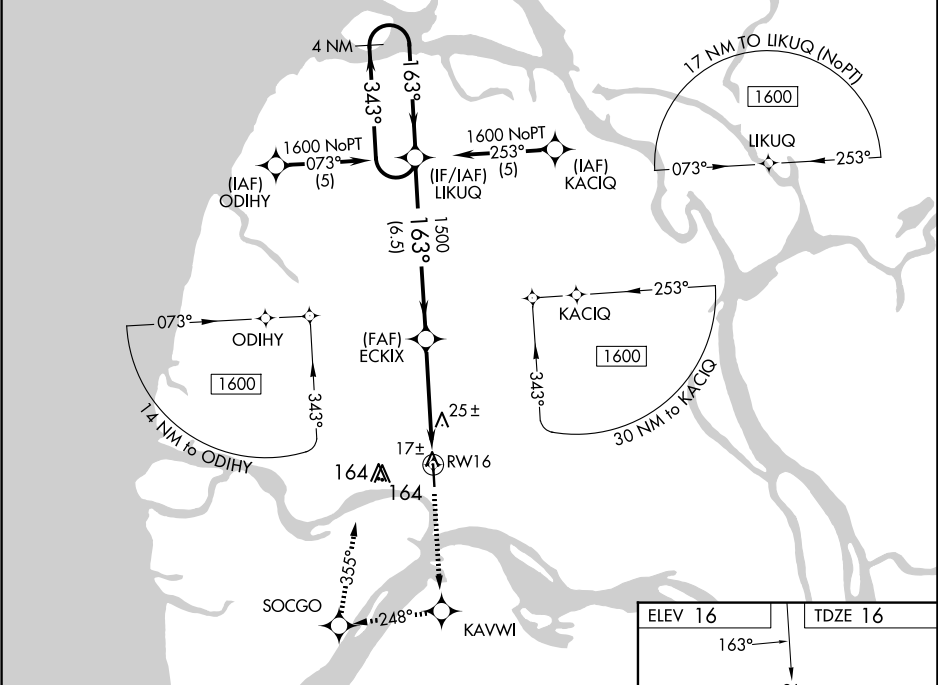
▼

▲

If local altimeter setting not received, use St Mary's altimeter setting and increase all DAs 168 feet and all MDAs 180 feet. VDP NA with St Mary's altimeter setting. DME/DME RNP- 0.3 NA. Baro-VNAV NA when using St Mary's altimeter setting. For uncompensated Baro-VNAV systems, LNAV/VNAV NA below -25°C (-13°F) or above 48°C (119°F).

MISSED APPROACH: Climb to 1600 direct KAVWI and right turn via 248° track to SOCGO and right turn via 355° track to LIKUQ and hold.

AWOS-3P 135.35	ANCHORAGE CENTER 124.0	CTAF 122.9 0
--------------------------	----------------------------------	------------------------



VGSI and RNAV glidepath not coincident (VGSI Angle 3.00/TCH 32).				1600	KAVWI	SOCGO	LIKUQ		
				↑	✧	tr 248°	✧	tr 355°	✧
									* LNAV only
4 NM Holding Pattern									
1600 ← 343°									
GP 3.00° TCH 35									