

WAAS CH 87004 W19A	APP CRS 194°	Rwy Idg 6115 TDZE 1065 Apt Elev 1071
--	------------------------	--

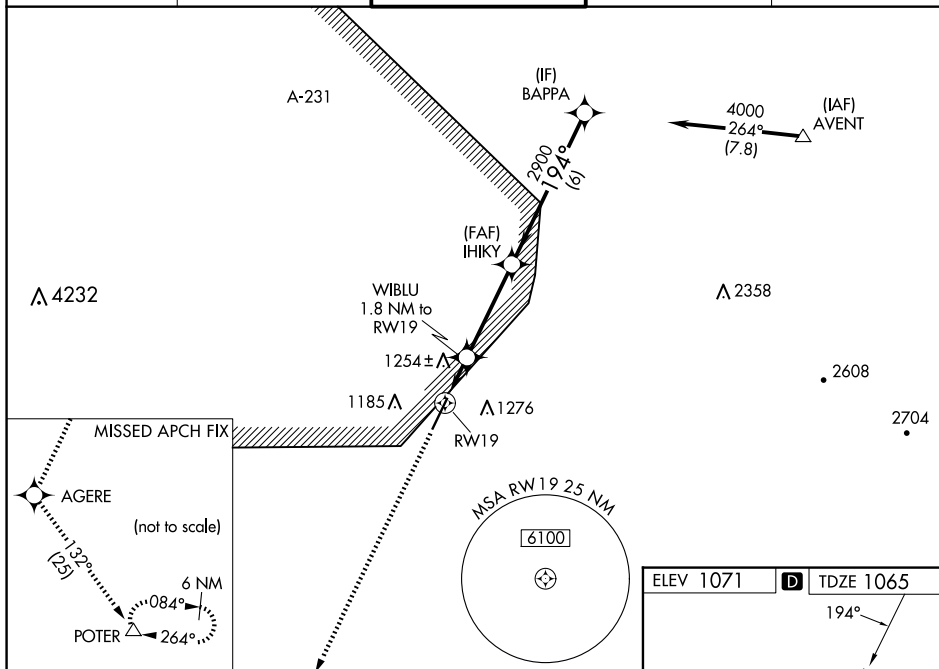
RNAV (GPS) RWY 19
GLENDALE RGNL (GEU)

RNP APCH.

⚠ For uncompensated Baro-VNAV systems, LNAV/VNAV NA below -17°C or above 47°C. Rwy 19 helicopter visibility reduction below $\frac{3}{4}$ SM NA. VDP and Baro-VNAV NA when using Phoenix Sky Harbor Intl altimeter setting. When local altimeter setting not received, use Phoenix Sky Harbor Intl altimeter setting: increase LPV DA to 1384 feet; increase LNAV/VNAV DA to 1617 feet and all Cats visibility $\frac{1}{4}$ SM; increase all MDA 60 feet and LNAV Cat C and D visibility $\frac{1}{4}$ SM.

MISSED APPROACH: Climb to 5000 direct AGERE then climb to 8000 on track 132° to POTER and hold.

ATIS 119.425	LUKE APP CON★ 118.15 363.125	GLENDAL TOWER ★ 121.0 (CTAF) 0	GND CON 118.0	UNICOM 122.95
-----------------	---------------------------------	-----------------------------------	------------------	------------------



5000 ↑	AGERE ✦	8000 ↑ tr 132°	POTER △	VGSI and RNAV glidepath not coincident (VGSI Angle 3.00/TCH 30).			
*LNAV only				WIBLU 1.8 NM to RW19	IHIKY 2900	BAPPA	Procedure Turn NA
CATEGORY	A		B		C		D
LPV DA	1339-1 274 (300-1)						
LNAV/ VNAV DA	1572-1 $\frac{3}{4}$ 507 (600-1 $\frac{3}{4}$)						
LNAV MDA	1540-1 475 (500-1)		1540-1 $\frac{3}{8}$ 475 (500-1 $\frac{3}{8}$)		1540-1 $\frac{1}{2}$ 475 (500-1 $\frac{1}{2}$)		

