

WAAS CH 90306 W01A	APP CRS 014°	Rwy Idg TDZE 1049 Apt Elev 1071
--	------------------------	---

RNAV (GPS) RWY 1

GLENDALE RGNL (GEU)

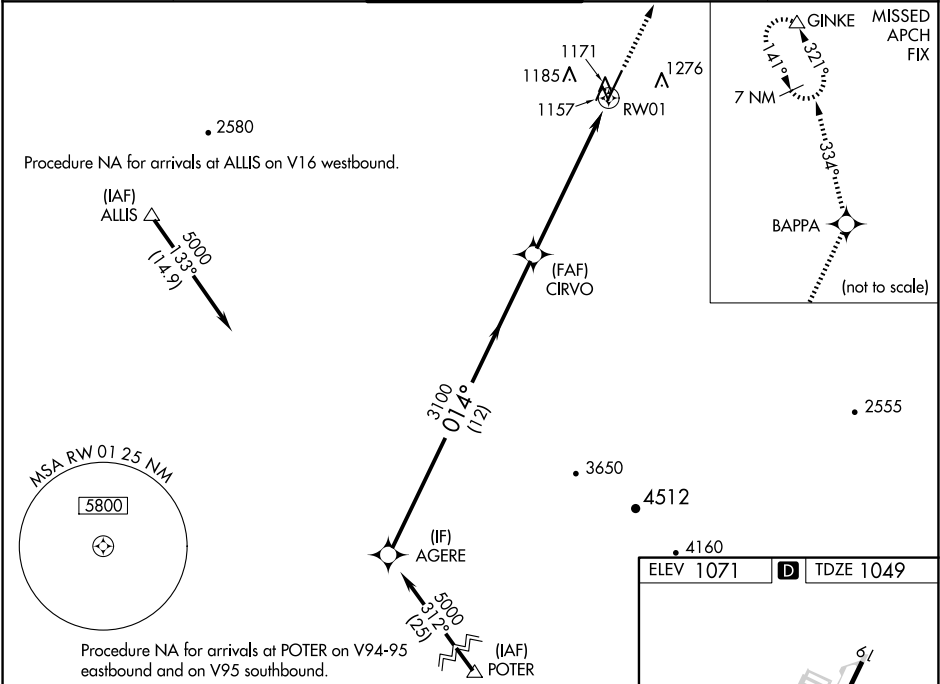
RNP APCH.

⚠

Baro-VNAV NA when using Phoenix Sky Harbor Intl altimeter setting. For uncompensated Baro-VNAV systems, LNAV/VNAV NA below -17°C or above 47°C. When local altimeter setting not received, use Phoenix Sky Harbor Intl altimeter setting; increase LPV DA to 1438 feet; increase LNAV/VNAV DA to 1517 feet and all visibilities ¼ SM; increase all MDA 60 feet and LNAV Cat C and D visibility ¼ SM. Night landing: Rwy 1, Cat C and D operational VGSI required, remain on or above VGSI glidepath until threshold. Rwy 1 helicopter visibility reduction below ¾ SM NA.

MISSED APPROACH: Climb to 10000 direct BAPPA and on 334° track to GINKE and hold, continue climb-in-hold to 10000.

ATIS 119.425	LUKE APP CON ★ 118.15 363.125	GLENDALE TOWER ★ 121.0 (CTAF) 0	GND CON 118.0	UNICOM 122.95
------------------------	---	--	-------------------------	-------------------------



Procedure Turn NA		10000		BAPPA	GINKE
AGERE		↑		★	△
5000		014°		334° tr	
GP 3.00° TCH 40		CIRVO		RWY 01	
12 NM		6.2 NM			
CATEGORY	A	B	C	D	
LPV DA	1378-1¼		329 (400-1¼)		
LNAV/VNAV DA	1457-1½		408 (400-1½)		
LNAV MDA	1440-1	391 (400-1)	1440-1⅛ 391 (400-1⅛)	1440-1¼ 391 (400-1¼)	

TWR 1106

7130 × 100

0.4% UP

014°

MIRL Rwy 1-19 **0**

REIL Rws 1 and 19 **0**