

JUDTH SEVEN DEPARTURE (RNAV)

AL-6915 (FAA)

GLENDALÉ RGNL (GÆU)
GLENDALÉ, ARIZONA

SW-4, 10 JUL 2025 to 07 AUG 2025

ATIS
119.425
GND CON
118.0
GLENDALÉ TOWER ★
121.0
LUKE DEP CON ★
118.15 363.125
PHOENIX DEP CON
120.7 239.0



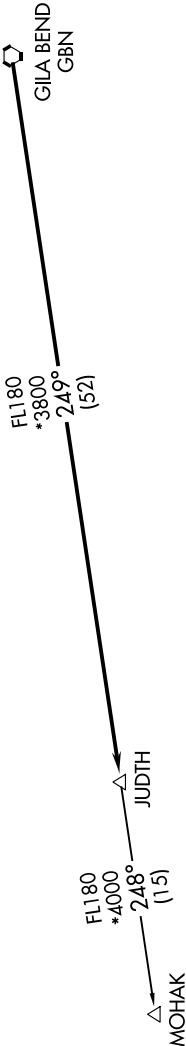
DEPARTURE ROUTE DESCRIPTION

TAKEOFF RUNWAY 1: Climb heading 014° or as assigned by ATC, thence. . . .
TAKEOFF RUNWAY 19: Climb heading 200° or as assigned by ATC, thence. . . .
. . . . expect RADAR vectors to GBN VORTAC, then on track 249° to JUDTH,
then on (transition). Maintain ATC assigned altitude, expect filed altitude 3
minutes after departure.

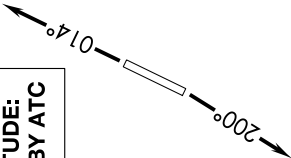
MOHAK TRANSITION (JUDTH7.MOHAK)

NOTE: RNAV 1.
NOTE: Turbojets and turboprops only.
NOTE: RADAR required.
NOTE: GPS required.
NOTE: Aircraft departing KGEU and KGYR ATC assigned only.

TAKEOFF MINIMUMS
Rwys 1, 19: Standard.



TOP ALTITUDE:
ASSIGNED BY ATC



NOTE: Chart not to scale.

JUDTH SEVEN DEPARTURE (RNAV)

SW-4, 10 JUL 2025 to 07 AUG 2025