

SW-4, 10 JUL 2025 to 07 AUG 2025

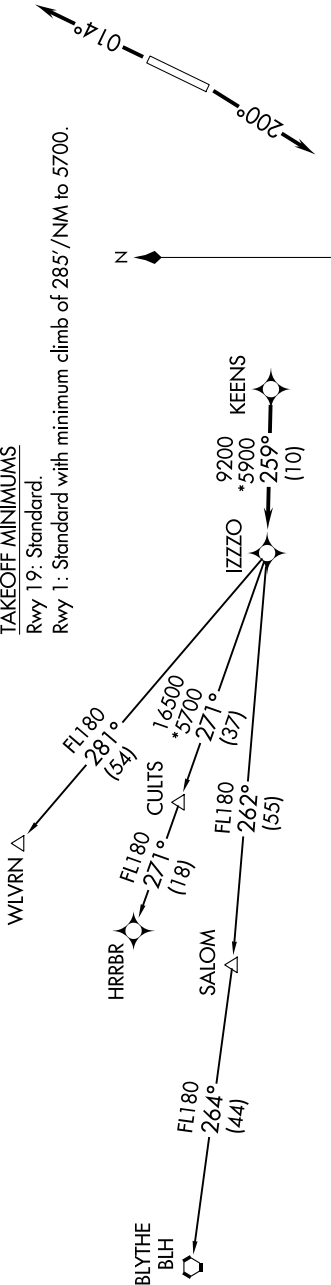
LUKE DEP CON★  
118.15 363.125  
PHOENIX DEP CON  
120.7 239.0  
ATIS  
119.425  
GND CON  
118.0  
GLENDALE TOWER★  
121.0

TOP ALTITUDE:  
ASSIGNED BY ATC

RNAV 1 - GPS.  
RADAR required.

NOTE: Turbojets and turboprops only.  
NOTE: Aircraft requesting FL220 and below must file BLYTHE Transition.  
NOTE: Turbojets landing LAX, file WLVRN Transition.  
NOTE: Aircraft landing other than LAX and turboprops landing at LAX: Requesting FL240 and above, file HRRBR Transition.  
NOTE: Aircraft departing KGEU and KGYR ATC assigned only.

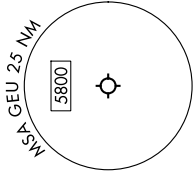
TAKEOFF MINIMUMS  
Rwy 19: Standard.  
Rwy 1: Standard with minimum climb of 285' /NM to 5700.



DEPARTURE ROUTE DESCRIPTION

TAKEOFF RUNWAY 1: Climb on heading 014° or as assigned by ATC, thence. . .  
TAKEOFF RUNWAY 19: Climb on heading 200° or as assigned by ATC, thence. . .  
... for RADAR vectors to KEENS, then on track 259° to IZZO, then on (transition).  
Maintain ATC assigned altitude, expect filed altitude 3 minutes after departure.

BLYTHE TRANSITION (IZZZO8.BLH)  
HRRBR TRANSITION (IZZZO8.HRRBR)  
WLVRN TRANSITION (IZZZO8.WLVRN)



NOTE: Chart not to scale.

SW-4, 10 JUL 2025 to 07 AUG 2025