

WAAS CH 72838 W28A	APP CRS 276°	Rwy Idg TDZE 236 Apt Elev 240	5002
--	------------------------	---	-------------

RNAV (GPS) RWY 28

BERRIEN COUNTY (4J2)

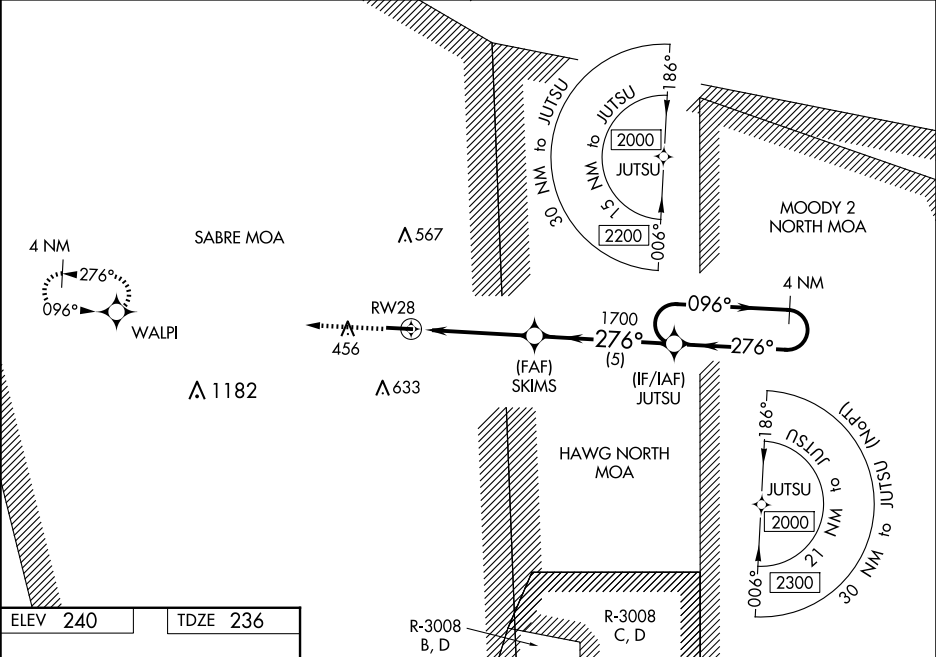
⚠

NA

Baro-VNAV NA. Rwy 28 helicopter visibility reduction below 1 SM NA. DME/DME RNP-0.3 NA. Straight-in Rwy 28 NA at night, Circling Rwy 28 NA at night. Use Moody AFB altimeter setting. When not received, use Douglas altimeter setting and increase all LPV DA to 602 feet, LNAV/VNAV DA to 561 feet, and all MDA 40 feet. Increase LNAV and Circling Cat C visibility ¼ SM.

MISSED APPROACH: Climb to 2200 direct WALPI and hold.

KVAD ATIS ★ 273.5	VALDOSTA APP CON ★ 126.6 285.6	UNICOM 122.7 (CTAF) 0
-----------------------------	--	---------------------------------



ELEV 240	TDZE 236
-----------------	-----------------

2200

WALPI

VGSI and RNAV glidepath not coincident (VGSI Angle 3.00/TCH 60).

4 NM Holding Pattern

RW28

SKIMS 1700

JUTSU 2000

GP 3.00° TCH 60

CATEGORY	A	B	C	D
LPV DA	578-1	342 (400-1)		NA
LNAV/VNAV DA	537-1	301 (300-1)		NA
LNAV MDA	740-1	504 (500-1)	740-1 3/8 504 (500-1 3/8)	NA
CIRCLING	740-1 500 (600-1)	800-1 560 (600-1)	980-2 740 (800-2)	NA

MIRL Rwy 10-28 0
REIL Rws 10 and 28 0