

WAAS CH <b>69438</b> <b>W10A</b>	APP CRS <b>096°</b>	Rwy Idg TDZE Apt Elev	<b>5002</b> <b>240</b> <b>240</b>
--	------------------------	-----------------------------	---

**RNAV (GPS) RWY 10**  
BERRIEN COUNTY (4J2)

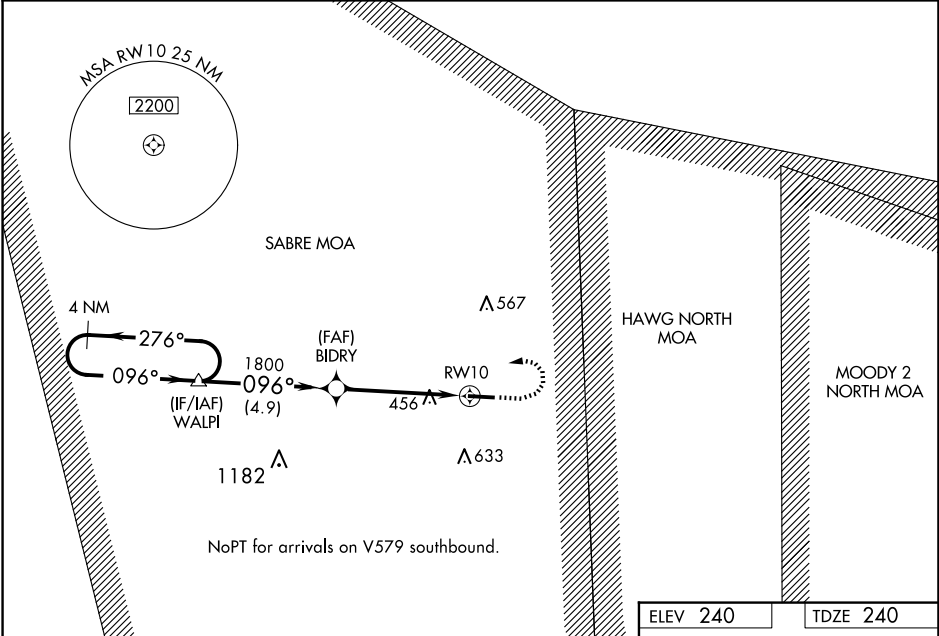
**T**

**NA**

Baro-VNAV NA. DME/DME RNP-0.3 NA. Helicopter visibility reduction below ¾ SM NA. Use Moody AFB altimeter setting. When not received, use Douglas altimeter setting and increase all DA 24 feet and MDA 40 feet; increase LNAV/VNAV all Cats visibility ¼ mile and increase LNAV Cat C and Circling Cat C visibility ¼ mile. Night landing: Rwy 28 NA.

MISSED APPROACH: Climb to 800 then climbing left turn to 2200 direct WALPI and hold.

KVAD ATIS ★ <b>273.5</b>	VALDOSTA APP CON ★ <b>126.6 285.6</b>	UNICOM <b>122.7 (CTAF) 0</b>
-----------------------------	--	---------------------------------



VGSI and RNAV glidepath not coincident (VGSI Angle 3.00/TCH 40).

4 NM Holding Pattern

WALPI

BIDRY

2200

1800

GP 3.00° TCH 40

4.9 NM

4.8 NM

800

2200

WALPI

096°

10

5002 X 75

28

CATEGORY	A	B	C	D
LPV DA	560-1 ⅝	320 (400-1 ⅝)		NA
LNAV/VNAV DA	793-1 ⅝	553 (600-1 ⅝)		NA
LNAV MDA	760-1	520 (600-1)	760-1 ⅝ 520 (600-1 ⅝)	NA
CIRCLING	820-1	580 (600-1)	980-2 740 (800-2)	NA

MIRL Rwy 10-28 0

REIL Rwy 10 and 28 0

SE-4, 10 JUL 2025 to 07 AUG 2025

SE-4, 10 JUL 2025 to 07 AUG 2025