

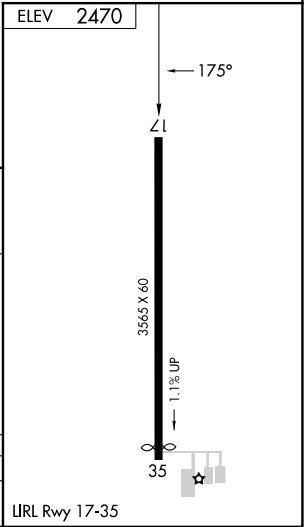
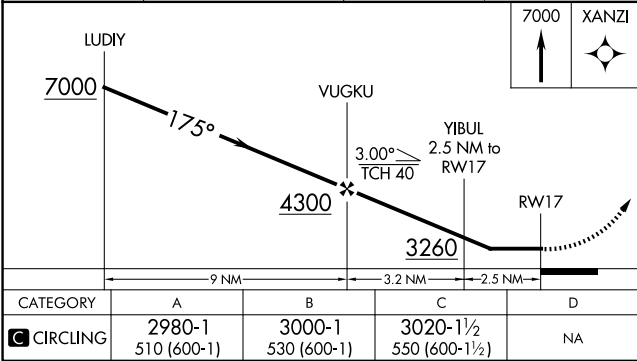
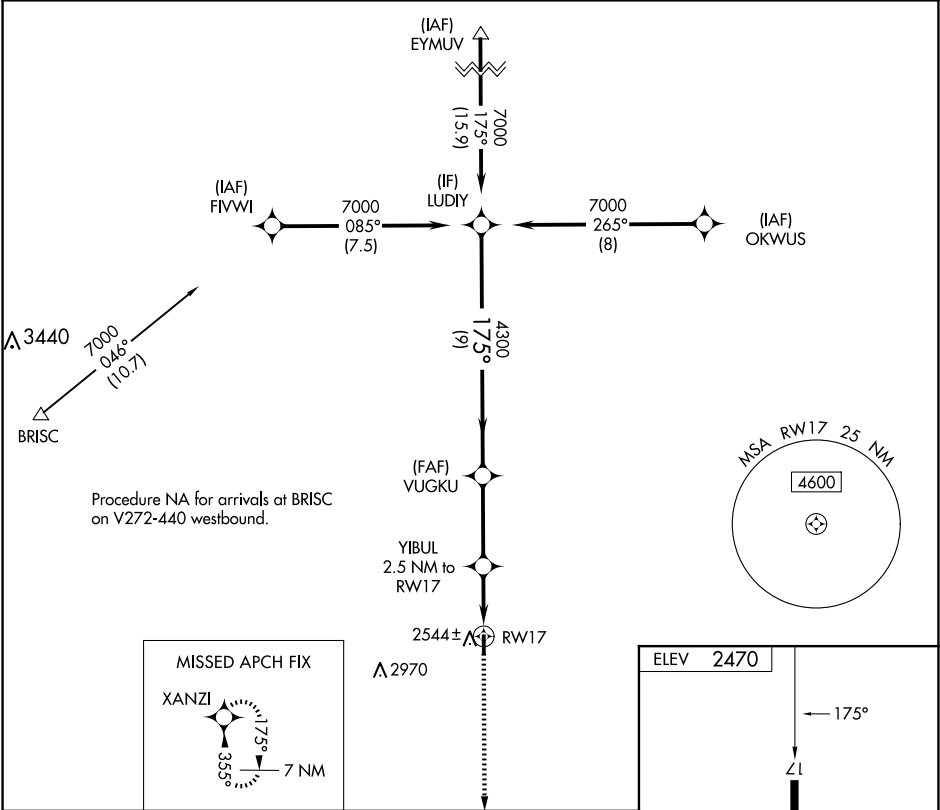
APP CRS	Rwy Idg	N/A
175°	TDZE	N/A
	Apt Elev	2470

RNAV (GPS)-A
WHEELER MUNI (T59)

Helicopter visibility reduction below 3/4 SM NA. DME/DME RNP-0.3 NA. Use Hemphill County altimeter setting.

MISSED APPROACH: Climb to 7000 direct XANZI and hold, continue climb-in-hold to 7000.

HHF AWOS-3 119.025	ALBUQUERQUE CENTER 127.85 285.475	CTAF 122.9
-----------------------	--------------------------------------	---------------



SC-2, 10 JUL 2025 to 07 AUG 2025

SC-2, 10 JUL 2025 to 07 AUG 2025