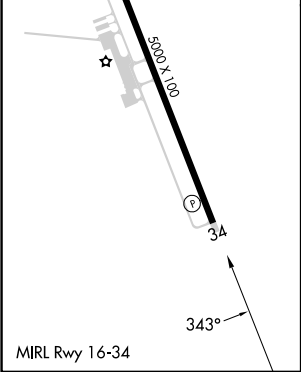
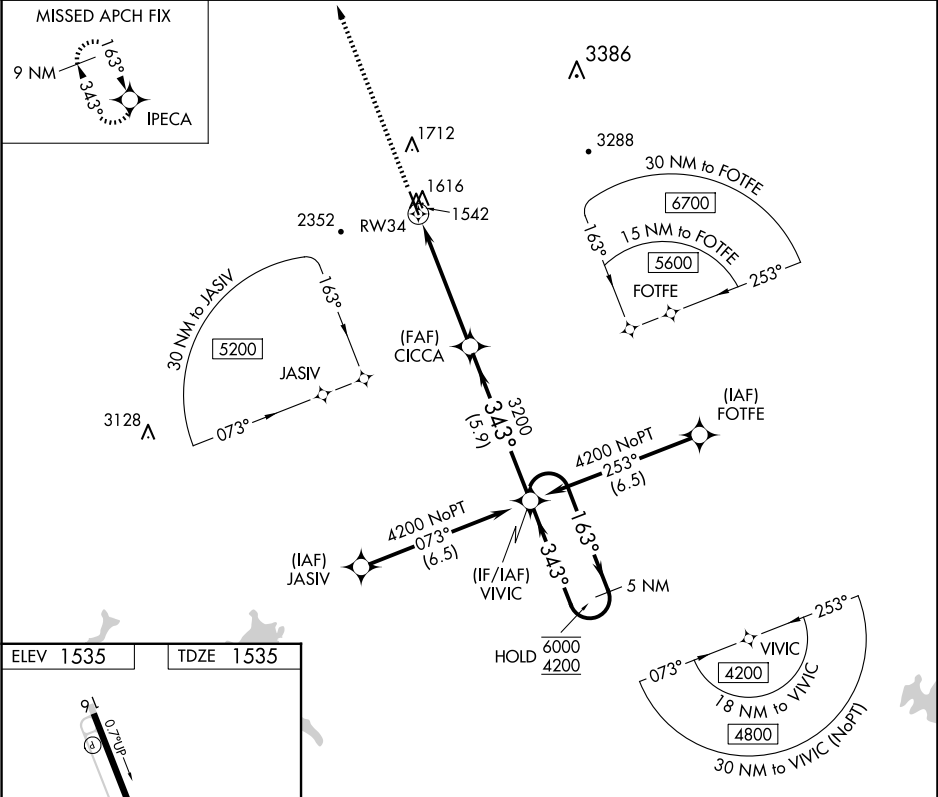


WAAS CH 77705 W34A	APP CRS 343°	Rwy Ldg TDZE 1535 Apt Elev 1535
--	------------------------	---

RNAV (GPS) RWY 34
PICKENS COUNTY (JZP)

RNP APCH - GPS.	MISSED APPROACH: Climb to 5600 direct IPECA and hold, continue climb-in-hold to 5600.
-----------------	---

AWOS-AV 120.025	ATLANTA CENTER 133.1 342.425	UNICOM 122.725 (CTAF)
---------------------------	--	---------------------------------



5600 ↑		IPECA 		VGSI and RNAV glidepath not coincident (VGSI Angle 3.00/TCH 29).			5 NM Holding Pattern		
				CICCA 3200		VIVIC			
		1 NM to RW34 ↓		3200 ↙		163° → 6000 ← 343° 4200			
				3200 ↘		GP 3.00° TCH 40			
		1 NM		4.1 NM		5.9 NM			
CATEGORY		A		B		C		D	
LPV DA				1789-7/8 254 (300-7/8)				NA	
LNAV MDA				1880-1 345 (400-1)				NA	
C CIRCLING		2040-1 505 (600-1)		2380-1¼ 845 (900-1¼)		2800-3 1265 (1300-3)		NA	

SE-4, 10 JUL 2025 to 07 AUG 2025

SE-4, 10 JUL 2025 to 07 AUG 2025