

WAAS CH 48843 W09A	APP CRS 092°	Rwy Idg TDZE 489 Apt Elev 494
--	------------------------	---

RNAV (GPS) RWY 9

LOUISA COUNTY/FREEMAN FLD (LKU)

RNP APCH.

⚠

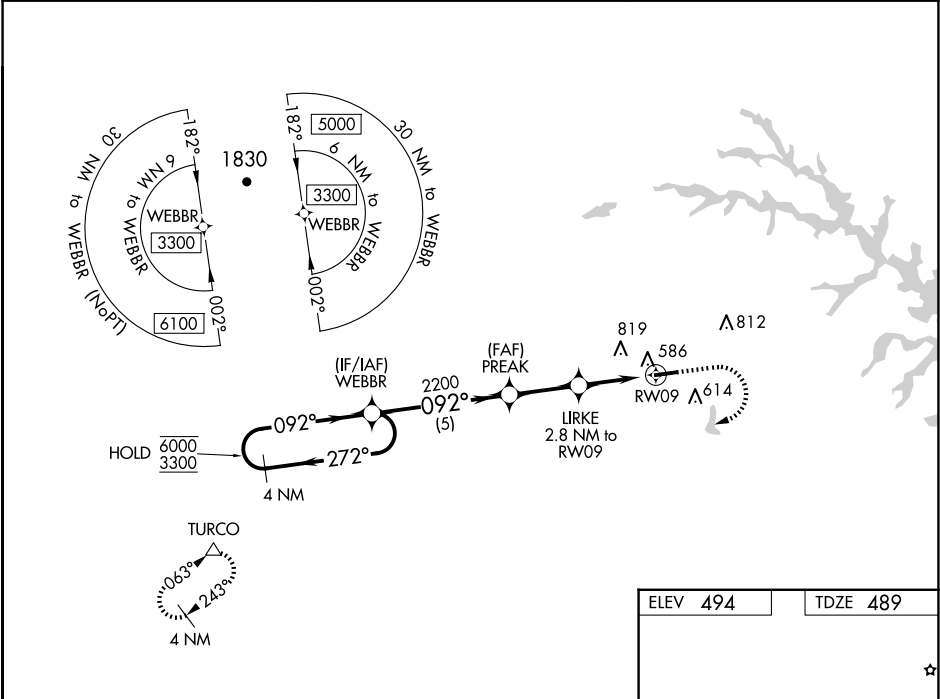
Circling NA north of Rwy 9-27. Rwy 9 helicopter visibility reduction below ¾ SM NA.

⚠

For uncompensated Baro-VNAV systems, LNAV/VNAV NA below -15°C or above 54° C. When local altimeter setting not received, use Orange altimeter setting and increase LPV DA to 775 feet, LNAV/VNAV DA to 784 feet and MDA 40 feet; increase LPV and LNAV/VNAV visibility ½ SM. Baro-VNAV and VDP NA when using Orange altimeter setting.

MISSED APPROACH: Climb to 1000 then climbing right turn to 3300 direct TURCO and hold.

AWOS-3 119.475	POTOMAC APP CON 132.85 323.125	UNICOM 122.975 (CTAF) 0
--------------------------	--	-----------------------------------



4 NM Holding Pattern				
WEBBR				
PREAK				
LIRKE 2.8 NM to RW09				
*1 NM to RW09				
*LNAV only.				
GP 3.00° TCH 40				
5 NM 2.5 NM 1.8 NM 1 NM				
CATEGORY	A	B	C	D
LPV DA	739-¾	250 (300-¾)	NA	
LNAV/VNAV DA	748-¾	259 (300-¾)	NA	
LNAV MDA	840-1	351 (400-1)	NA	
CIRCLING	900-1 406 (500-1)	960-1 466 (500-1)	NA	

ELEV 494 TDZE 489

092°

0.6% UP

4300 X 100

27

REIL Rwy 9 and 27 0
MIRL Rwy 9-27 0