

WAAS CH 58318 W27A	APP CRS 272°	Rwy Idg TDZE 494 Apt Elev 494
--	------------------------	---

RNAV (GPS) RWY 27

LOUISA COUNTY/FREEMAN FLD (LKU)

RNP APCH

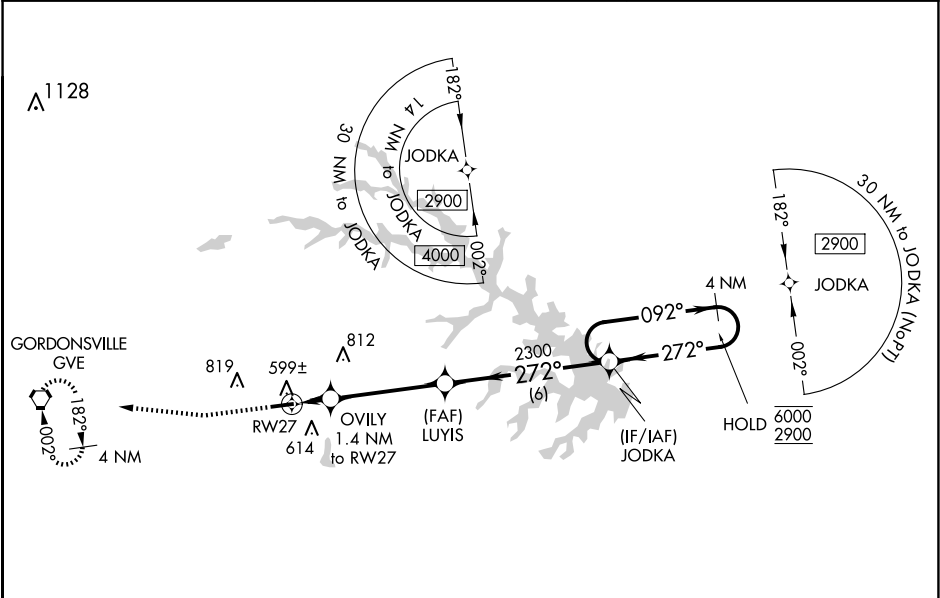
⚠

⚠

Circling NA north of Rwy 9-27. Baro-VNAV NA when using Orange altimeter setting. For uncompensated Baro-VNAV systems, LNAV/VNAV NA below -15°C or above 54°C. When local altimeter setting not received, use Orange altimeter setting and increase all DA to 780 feet and all MDA 40 feet and increase LPV and LNAV/VNAV visibility ½ SM.

MISSED APPROACH: Climb to 1000 then climbing right turn to 2900 direct GVE VORTAC and hold, continue climb-in-hold to 2900.

AWOS-3 119.475	POTOMAC APP CON 132.85 323.125	UNICOM 122.975 (CTAF) 0
--------------------------	--	-----------------------------------



ELEV 494 TDZE 494

REIL Rwy 9 and 27 0
MIRL Rwy 9-27 0

1000 2900 GVE			
*LNAV only			
RWY 27 1.4 NM to RWY 27 2300 272° 2300 272° 092° 6000 2900 4 NM Holding Pattern			
*980 1.4 NM 4.2 NM 6 NM			
CATEGORY	A	B	C D
LPV DA	744-¾	250 (300-¾)	NA
LNAV/VNAV DA	744-¾	250 (300-¾)	NA
LNAV MDA	860-1	366 (400-1)	NA
CIRCLING	900-1 406 (500-1)	960-1 466 (500-1)	NA