

NDB FMZ

392

APP CRS

166°

Rwy Idg

4317

TDZE

1636

Apt Elev

1636

NDB RWY 17

FAIRMONT STATE (FMZ)

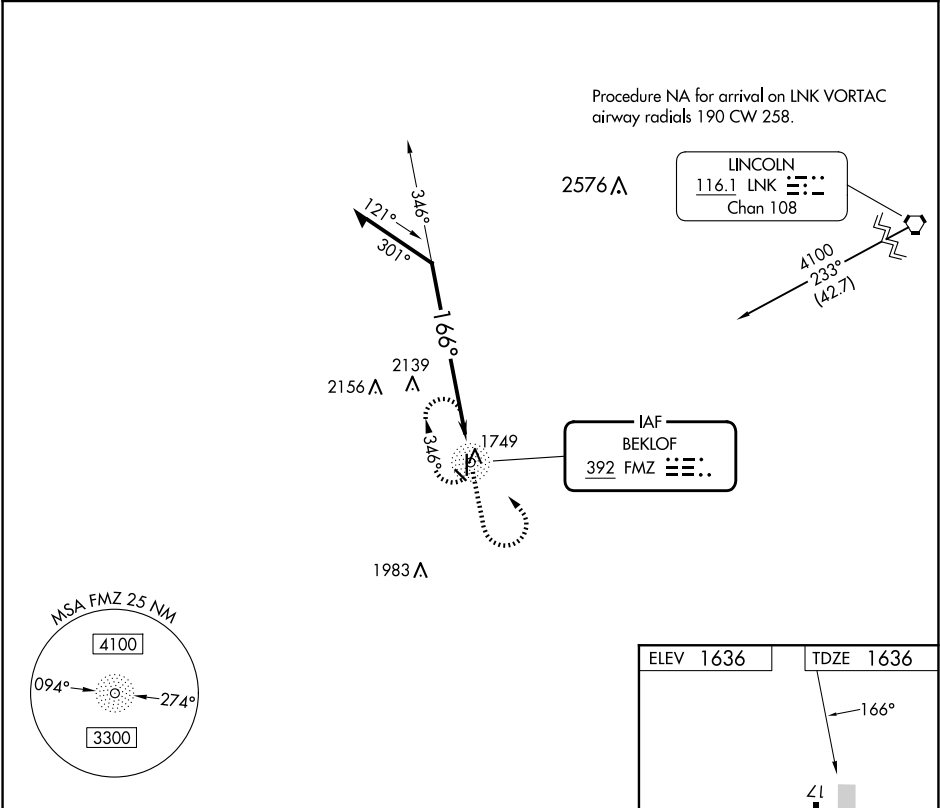
NA

Circling Rwy 12, 30 NA at night.
Use York altimeter setting; when not received, use Hebron altimeter setting and increase all MDAs 40 feet.

MISSED APPROACH:

Climb to 3200 then left turn direct FMZ NDB and hold.

<div>JYR AWOS-3</div> <div>124.175</div>	<div>MINNEAPOLIS CENTER</div> <div>119.4 278.8</div>	<div>CTAF</div> <div>122.9</div>
--	--	----------------------------------



MSA FMZ 25 NM

4100

3300

094°

274°

Remain within 10 NM

3200

346°

166°

FMZ NDB

3200

FMZ

ELEV 1636

TDZE 1636

166°

4317 X 75

35

3021 X 60

30

CATEGORY	A	B	C	D
S-17	2540-1¼	904 (1000-1¼)	NA	
CIRCLING	2540-1¼	904 (1000-1¼)	NA	

MIRL Rwy 17-35