

APP CRS  
351°

Rwy Idg	4000
TDZE	297
Apt Elev	297

RNAV (GPS) RWY 35  
ANV (ANV)(PANV)

RNP APCH - GPS.

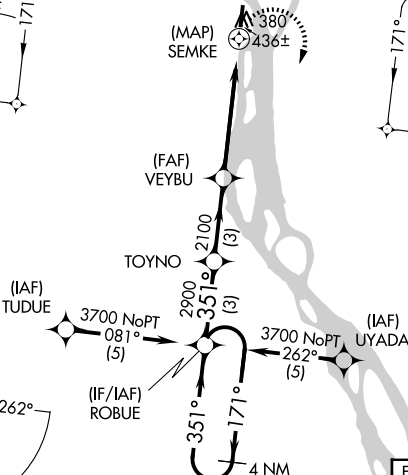
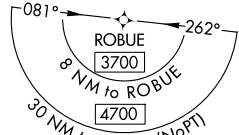
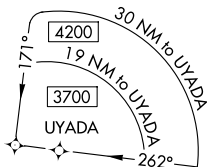
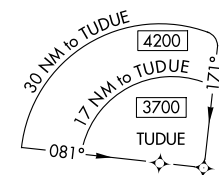


**MISSED APPROACH:** Climbing right turn to 3700 direct ROBUE and hold, continue climb-in-hold to 3700.

AWOS-3P  
**133.55**

ANCHORAGE CENTER  
135.7 335.5

KENAI RADIO  
122.4

UNICOM  
122.7 (CTAF) **L**

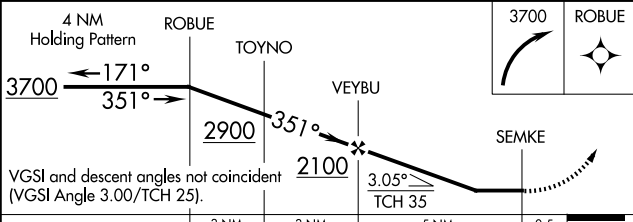
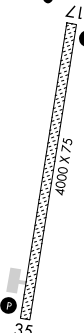
- 1807

ELEV 297

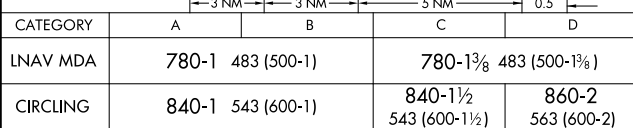
TDZE 297

MIRL Rwy 17-35 **L**

REIL Rwys 17 and 35 L



VGSI and descent angles not coincident  
(VGSI Angle 3.00/TCH 25).



ANVIK, ALASKA

Orig-B 10AUG23

ANVIK (ANV)(PANV)

RNAV (GPS) RWY 35

62°39'N-160°11'W

AK, 12 JUN 2025 to 07 AUG 2025