

APP CRS
171°

Rwy Idg
TDZE
Apt Elev

4000
296
297

RNAV (GPS) RWY 17

ANVIK (ANV)(PANV)

RNP APCH - GPS.

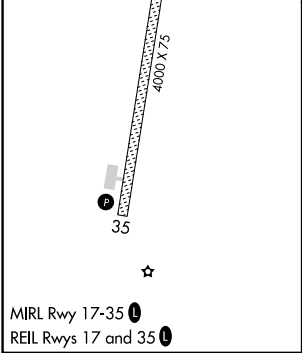
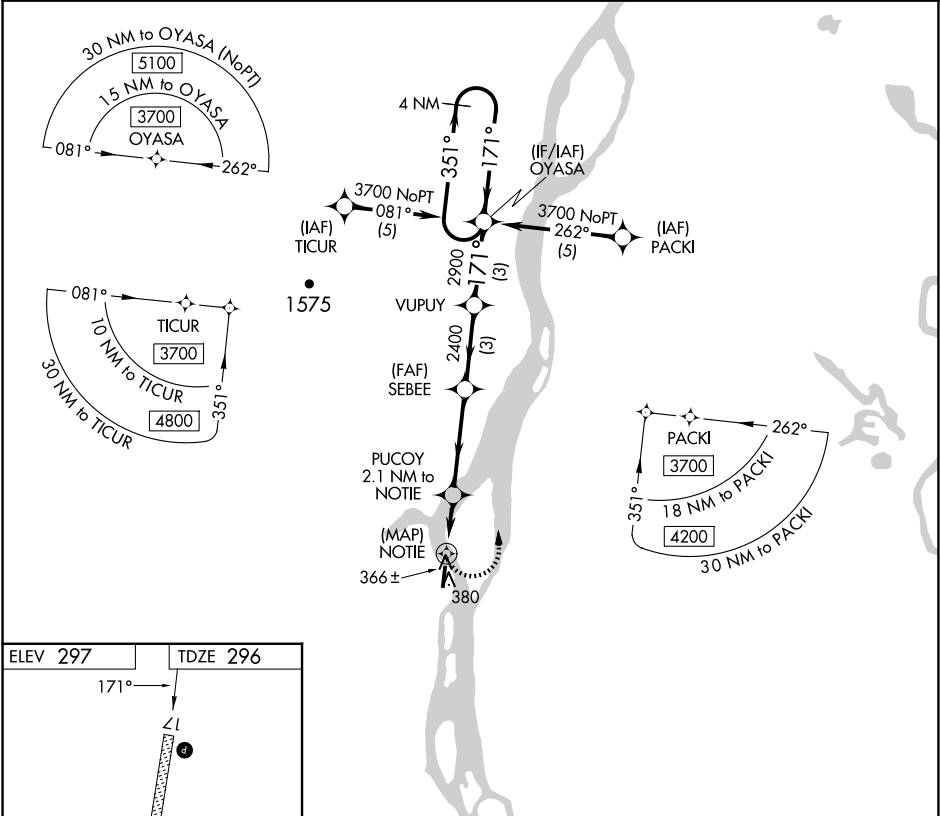
▼

▲

Rwy 17 helicopter visibility reduction below ¾ SM NA.

MISSED APPROACH: Climbing left turn to 3700 direct OYASA and hold, continue climb-in-hold to 3700.

AWOS-3P 133.55	ANCHORAGE CENTER 135.7 335.5	KENAI RADIO 122.4	UNICOM 122.7 (CTAF) 0
-------------------	---------------------------------	----------------------	--------------------------



3700	OYASA	VGSi and descent angles not coincident (VGSi Angle 3.00/TCH 25).			
PUCOY 2.1 NM to NOTIE		SEBEE	VUPUY	OYASA	4 NM Holding Pattern
NOTIE		3.06° TCH 35	2400	2900	3700
1140					
0.5		2.1 NM	3.8 NM	3 NM	3 NM
CATEGORY	A	B	C	D	
LNAV MDA	700-1	404 (500-1)	700-1¼	404 (500-1¼)	
CIRCLING	840-1	543 (600-1)	840-1½	860-2	
			543 (600-1½)	563 (600-2)	