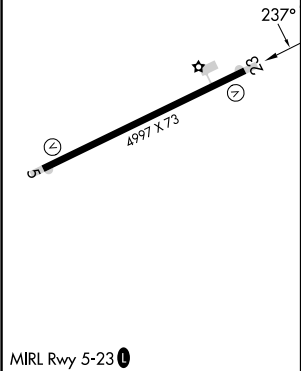
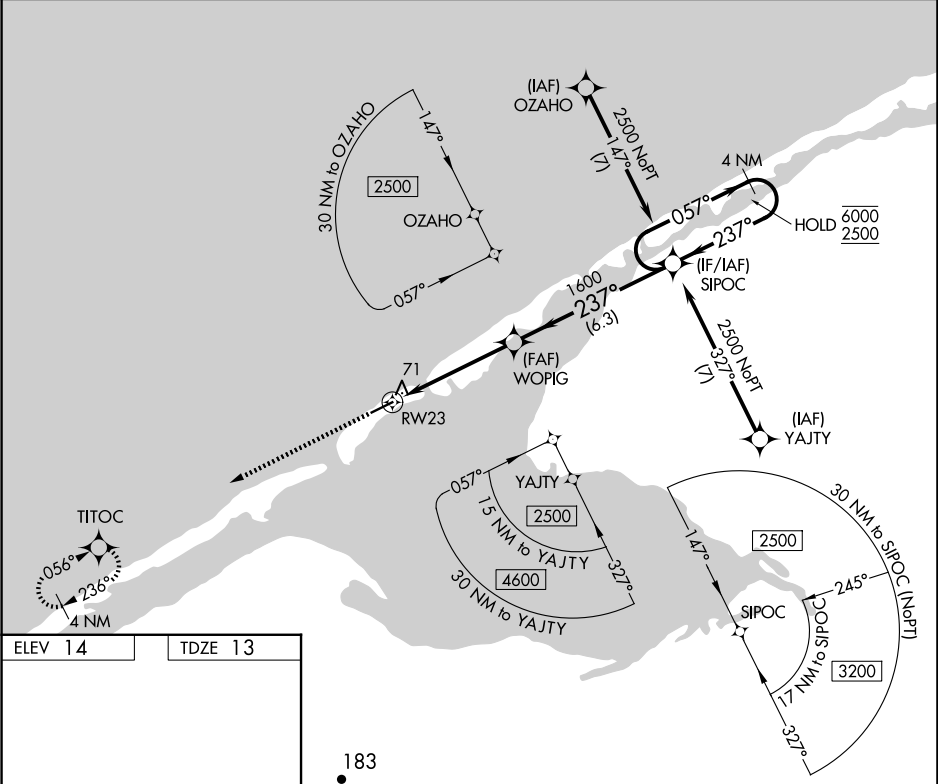


APP CRS	Rwy Ldg	4997
237°	TDZE	13
	Apt Elev	14

RNAV (GPS) RWY 23

SHISHMAREF (SHH) (PASH)

RNP AR APCH - GPS.		MISSED APPROACH: Climb to 2500 direct TITOC and hold.	
AWOS-3P	ANCHORAGE CENTER	NOME RADIO	CTAF
121.1	119.2 263.0	122.4	123.0 0



183		TITOC		VGSI and descent angles not coincident (VGSI Angle 3.00°/TCH 25).	
2500		WOPIG		SIPOC	
1.4 NM to RW23		3.5 NM		6.3 NM	
RW23		1600		SIPOC	
1.4 NM		3.5 NM		6.3 NM	
CATEGORY		A		B	
LNAV MDA		480-1		467 (500-1)	
CIRCLING		480-1		466 (500-1)	
4		480-1½		580-2	
MIRL Rwy 5-23 0		466 (500-1½)		566 (600-2)	