

WAAS
CH **65721**
W11A

APP CRS
112°

Rwy Idg
TDZE **829**
Apt Elev **838**

RNAV (GPS) RWY 11
SPARTA/FORT MC COY (CMY)

⚠

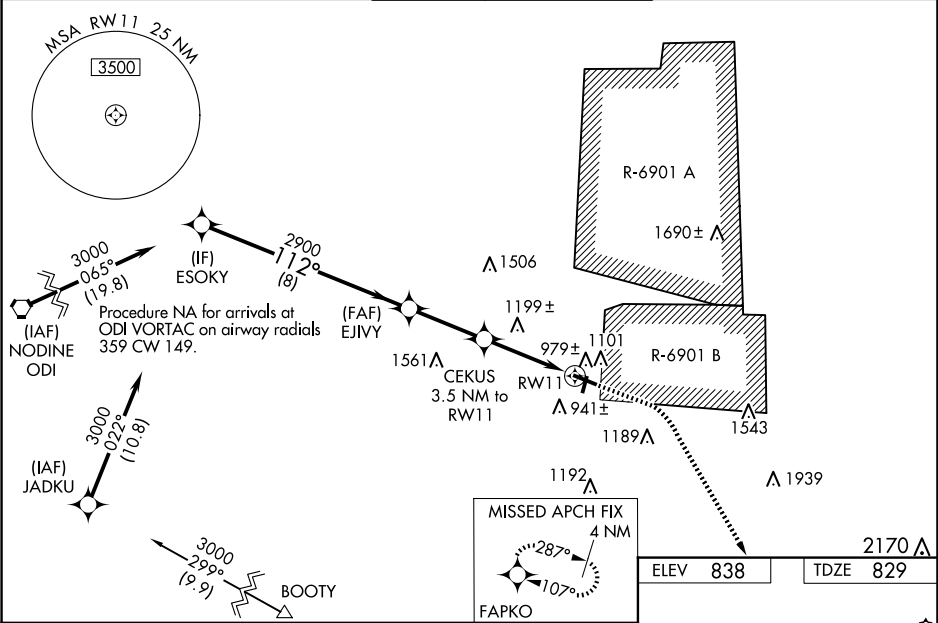
⚠

Circling to Rwy 19 NA at night. Baro-VNAV NA when using La Crosse altimeter setting. For uncompensated Baro-VNAV systems, LNAV/VNAV NA below -16°C (4°F) or above 38°C (100°F). DME/DME RNP-0.3 NA. Visibility reduction by helicopters NA. VDP NA with La Crosse altimeter setting. When local altimeter setting not received, use La Crosse altimeter setting and increase all DA 79 feet and all MDA 80 feet; increase LPV and LNAV/VNAV all Cats and LNAV and Circling Cats C/D visibility ¼ mile. Procedure not authorized when R-6901B active.

MISSED APPROACH:

Climb to 1700 then climbing right turn to 4000 direct FAPKO and hold.

ASOS 119.775	VOLK APP CON ★ 135.25 244.875	SPARTA/MC COY TOWER ★ 124.6 254.375	GND CON 123.625	CTAF 124.6 0
------------------------	---	---	---------------------------	------------------------



ESOKY		EJIVY		CEKUS		FAPKO	
3000		2900		3.5 NM to RW11		1700 4000	
GP 3.00°		112°		*1.9 NM to RW11		*LNAV only	
TCH 40		2900		*1960		RW11	
8 NM		2.9 NM		1.6 NM		1.9 NM	
CATEGORY	A	B	C	D			
LPV DA	1079-7/8		250 (300-7/8)				
LNAV/VNAV DA	1190-1 1/4		361 (400-1 1/4)				
LNAV MDA	1460-1 631 (700-1)		1460-1 3/4 631 (700-1 3/4)				
CIRCLING	1520-1 682 (700-1)		1560-1 722 (800-1)		1620-2 1/4 782 (800-2 1/4)		1860-3 1022 (1100-3)

The diagram shows a runway layout with Runway 11 (RW11) and Runway 29. Key features include:

- Runway 11: 4697 X 100 FT, 3023 X 65 FT, 0.4% TS.
- Runway 29: 3023 X 65 FT, 0.4% TS.
- Navigation Aids: ESOKY, EJIVY, CEKUS, FAPKO.
- Distances: 8 NM, 2.9 NM, 1.6 NM, 1.9 NM.
- Altitudes: 3000, 2900, 1700, 4000.
- Angles: 112°.
- Other: GP 3.00° TCH 40, *LNAV only, *1.9 NM to RW11, *1960.

REIL Rwy 11 and 29 0

MIRL Rwy 1-19 and 11-29 0