

23222

# RNAV (GPS) RWY 6

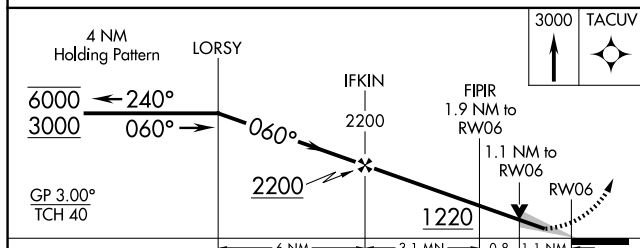
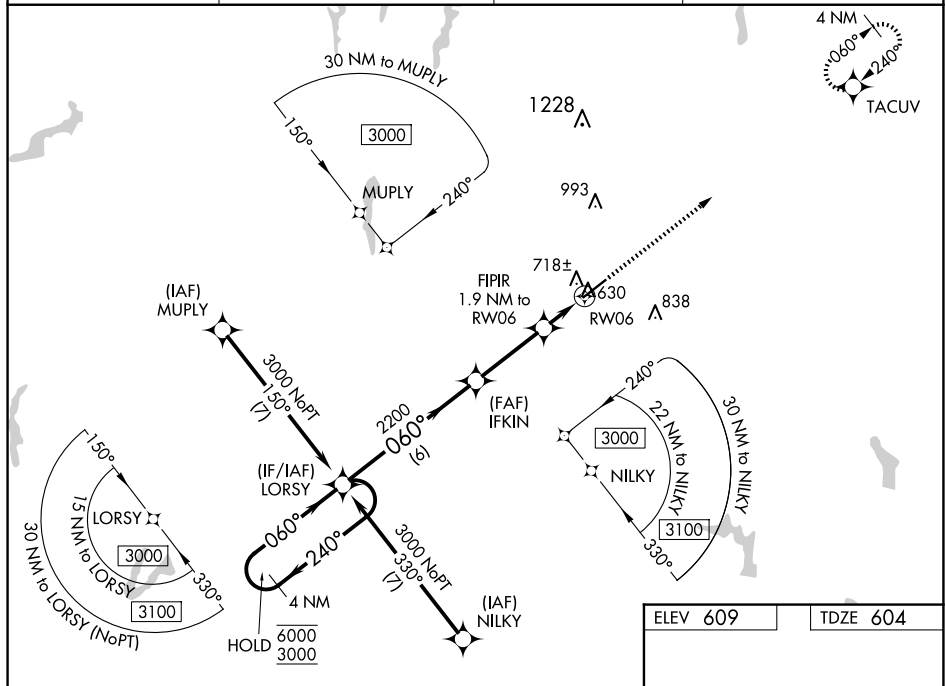
## RALEIGH RGNL AT PERSON COUNTY (TDF)

**T** For uncompensated Baro-VNAV systems, LNAV/VNAV NA below -16°C or  
**A** above 54°C. For inop ALS, increase LNAV/VNAV all Cats visibility to 7/5 SM  
and LNAV Cat C/D visibility to 1 SM.

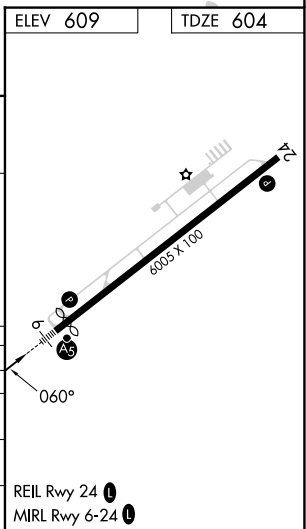


**MISSED APPROACH:**  
Climb to 3000 direct  
TACUV and hold.

AWOS-3 <b>126.725</b>	RALEIGH APP CON <b>132.35 256.9</b>	GCO <b>119.7</b>	UNICOM <b>122.7 (CTAF) ①</b>
--------------------------	--	---------------------	---------------------------------



CATEGORY	A	B	C	D
LPV DA	804- $\frac{1}{2}$		200 (200- $\frac{1}{2}$ )	
LNAV/ VNAV DA	879- $\frac{1}{2}$		275 (300- $\frac{1}{2}$ )	
LNAV MDA	980- $\frac{1}{2}$ 376 (400- $\frac{1}{2}$ )		980- $\frac{5}{8}$ 376 (400- $\frac{5}{8}$ )	
CIRCLING	1080-1 471 (500-1)		1300-2 691 (700-2) 1300-2 $\frac{1}{4}$ 691 (700-2 $\frac{1}{4}$ )	



RA  
36°17'N-78°59'W

RALEIGH RGNL AT PERSON COUNTY (TDF)  
W RNAV (GPS) RWY 6

SE-2, 10 JUL 2025 to 07 AUG 2025