

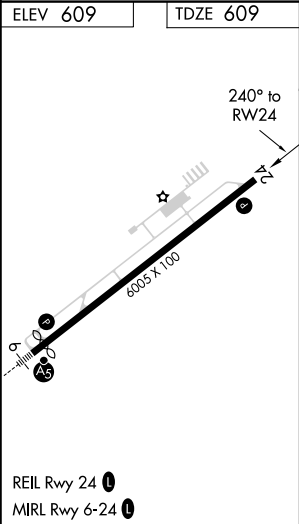
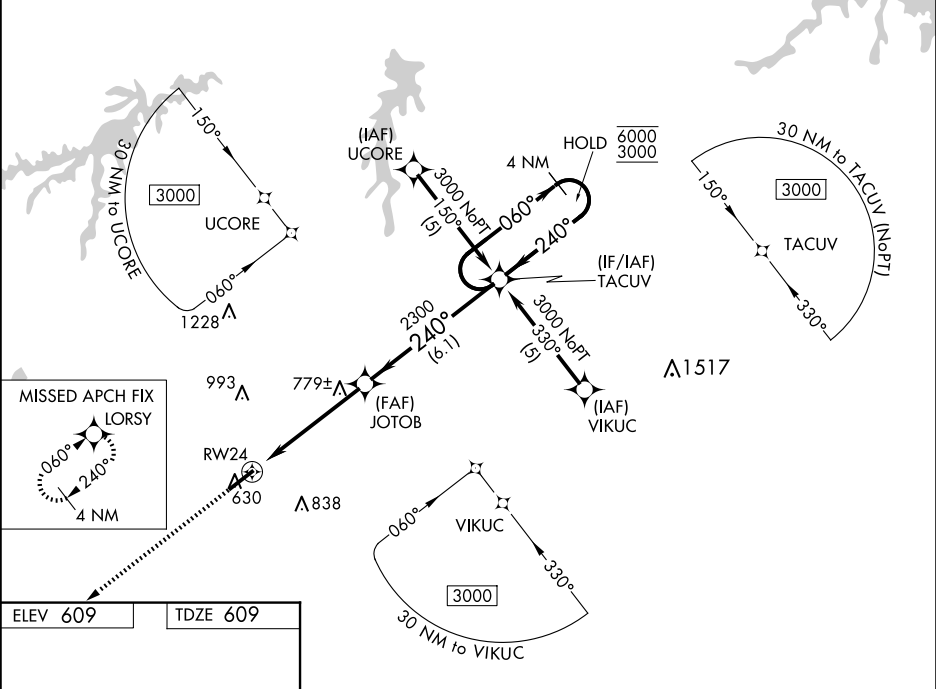
WAAS CH 50510 W24A	APP CRS 240°	Rwy Idg TDZE Apt Elev	6005 609 609
--	------------------------	-----------------------------	---


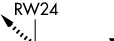
RNAV (GPS) RWY 24

RALEIGH RGNL AT PERSON COUNTY (TDF')

RNP APCH.	MISSED APPROACH: Climb to 3000 direct LORSY and hold.
▼ Rwy 24 helicopter visibility reduction below ¾ SM NA. For uncompensated ▲ Baro-VNAV systems, LNAV/VNAV NA below -16°C or above 54°C.	

AWOS-3 126.725	RALEIGH APP CON 132.35 256.9	GCO 119.7	UNICOM 122.7 (CTAF) 0
--------------------------	--	---------------------	---------------------------------



3000 ↑	LORSY 	VGSI and RNAV glidepath not coincident (VGSI Angle 3.00°/TCH 44).			4 NM Holding Pattern
*LNAV only		JOTOB 2300	TACUV		
	RW24 	2300	240°	060° → 6000 ← 240° 3000	
	1.2 NM	3.9 NM	6.1 NM	GP 3.00° TCH 40	
CATEGORY	A	B	C	D	
LPV DA	920-1 311 (400-1)				
LNAV/ VNAV DA	997-1½ 388 (400-1½)				
LNAV MDA	1040-1 431 (500-1)	1040-1¼ 431 (500-1¼)	1040-1½ 431 (500-1½)		
CIRCLING	1080-1 471 (500-1)	1300-2 691 (700-2)	1300-2¼ 691 (700-2¼)		