

LOC/DME I-TDF 108.7 Chan 24	APP CRS 060°	Rwy Idg 5702 TDZE 604 Apt Elev 609
---	------------------------	---

ILS or LOC RWY 6

RALEIGH RGNL AT PERSON COUNTY (TDF)

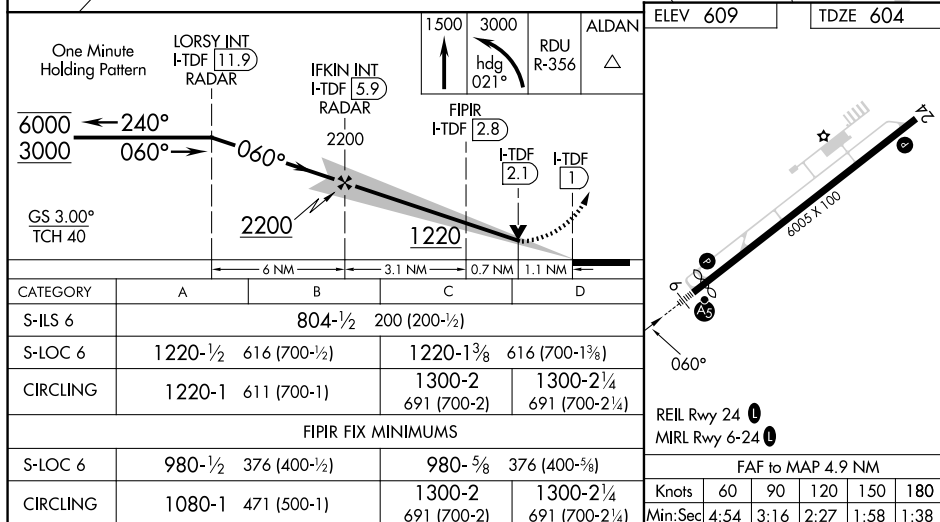
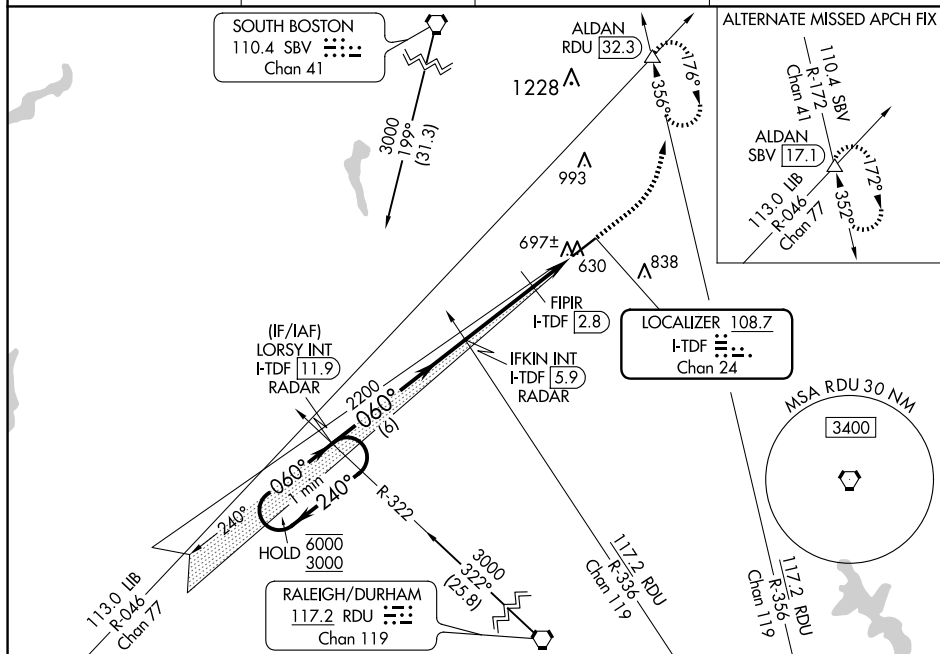
T For inop ALS, increase S-LOC 6 visibility Cats C/D to 1 $\frac{3}{4}$ SM and increase FIPIR fix minimums

A NA S-LOC 6 visibility Cats C/D to 1 SM.



MISSED APPROACH: Climb to 1500 then climbing left turn to 3000 on heading 021° and on RDU VORTAC R-356 to ALDAN INT/RDU 32.3 DME and hold, continue climb-in-hold to 3000.

AWOS-3 126.725	RALEIGH APP CON 132.35 256.9	GCO 119.7	UNICOM 122.7 (CTAF) ①
--------------------------	--	---------------------	---------------------------------



ILS or LOC RWY 6