

WAAS CH <b>93515</b> <b>W36A</b>	APP CRS <b>002°</b>	Rwy Idg <b>3513</b> TDZE <b>73</b> Apt Elev <b>74</b>
--	------------------------	---

## RNAV (GPS) RWY 36

HOLK FLD AT FOLEY MUNI (5R4)

RNP APCH - GPS	
----------------	--

**T** Procedure NA at night. Rwy 36 helicopter visibility reduction below 1 SM NA.  
**A** NA Use Fairhope altimeter setting. When not received, use Gulf Shores altimeter setting and increase all MDA 20 feet; increase LP and LNAV Cat C visibility  $\frac{1}{2}$  SM and Circling Cat C visibility  $\frac{1}{4}$  SM.

**MISSED APPROACH:**  
Climb to 3100 direct  
RUPQE and hold, continue  
climb-in-hold to 3100.

CQF AWQS-3PT

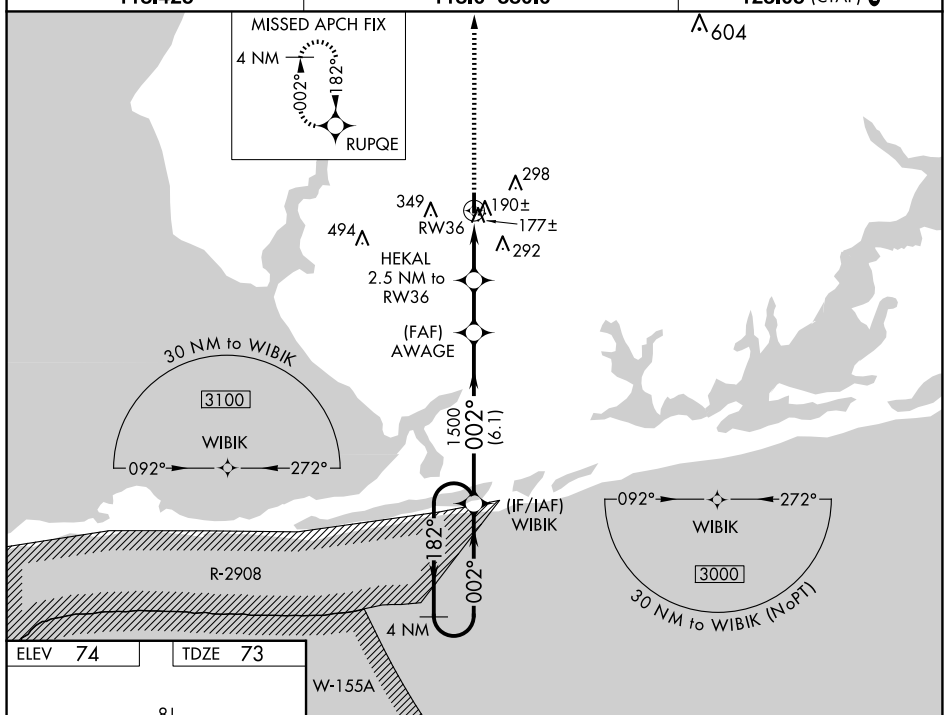
118-425

PENSACOLA APP CON

118-6 380-6

UNICOM

**123.05 (CTAF) Q**



CATEGORY	A	B	C	D
LP MDA	500-1	427 (500-1)	500-1¼ 427 (500-1¼)	NA
LNAV MDA	500-1	427 (500-1)	500-1¼ 427 (500-1¼)	NA
<b>C</b> CIRCLING	680-1	606 (700-1)	880-2¼ 806 (900-2¼)	NA