

WAAS CH 45516 W18A	APP CRS 182°	Rwy ldg TDZE Apt Elev 3700 72 74
--	------------------------	--

RNAV (GPS) RWY 18

HOLK FLD AT FOLEY MUNI (5R4)

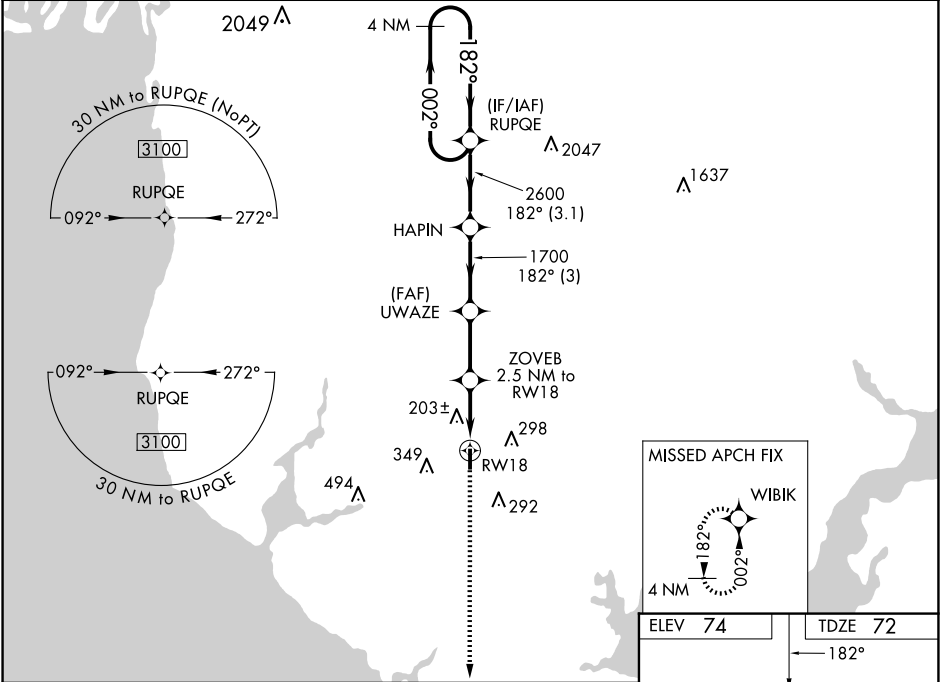
▼

▲ NA

Baro-VNAV NA. DME/DME RNP-0.3 NA. Procedure NA at night. Helicopter visibility reduction below 1 SM NA. Use Fairhope altimeter setting. When not received, use Gulf Shores altimeter setting and increase LPV DA to 397 feet, LNAV/VNAV DA to 547 feet, and all MDA 20 feet; increase LNAV Cat C visibility ½ mile and Circling Cat C visibility ¼ mile.

MISSED APPROACH: Climb to 3000 direct WIBIK and hold, continue climb-in-hold to 3000.

QCF AWOS-3PT 118.425	PENSACOLA APP CON 118.6 380.6	UNICOM 123.05 (CTAF) 0
--------------------------------	---	----------------------------------



4 NM Holding Pattern		VGSI and RNAV glidepath not coincident (VGSI Angle 3.00/TCH 40).		3000	WIBIK
3100 ← 002° 182° →		HAPIN	UWAZE	ZOVEB 2.5 NM to RW18	*LNAV only
GP 3.00° TCH 54		2600	1700	1700	*900
← 3.1 NM →		← 3 NM →	← 2.5 NM →	← 2.5 NM →	
CATEGORY	A	B	C	D	
LPV DA	393-1 321 (400-1)			NA	
LNAV/VNAV DA	543-1½ 471 (500-1½)			NA	
LNAV MDA	480-1 408 (500-1)		480-1½ 408 (500-1½)	NA	
CIRCLING	680-1 606 (700-1)		880-2¼ 806 (900-2¼)	NA	

