

21252

| | |
|----------|------|
| Rwy Idg | 6669 |
| TDZE | 73 |
| Apt Elev | 76 |

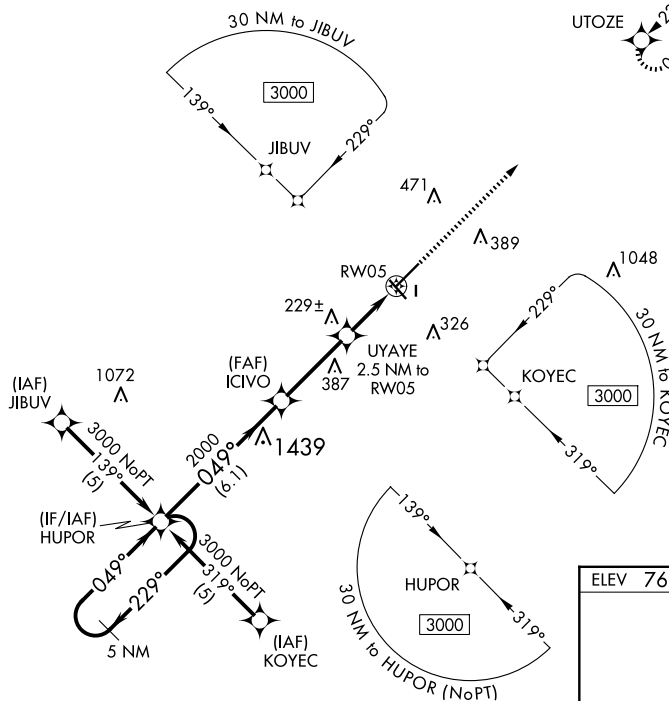
RNAV (GPS) RWY 5
WILLISTON MUNI (X60)

T When local altimeter setting not received, use Ocala altimeter setting and increase all MDAs 60 feet and all Cat C visibilities $\frac{1}{4}$ SM. Circling Rwy 14, 32 NA at night. Rwy 5 helicopter
A NA visibility reduction below $\frac{3}{4}$ SM NA. Circling NA to Rwy 18 and 36.

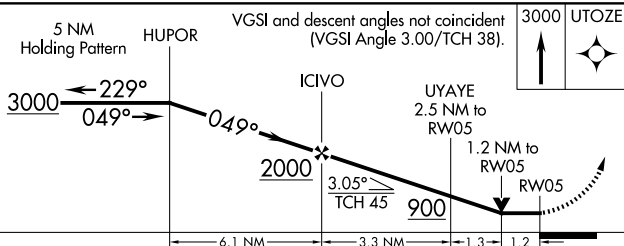
MISSED APPROACH:
Climb to 3000 direct
UTOZE and hold.

JACKSONVILLE APP CON
118.6 251.15

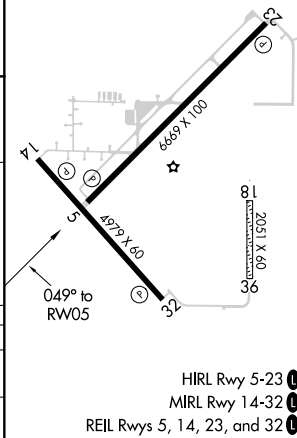
UNICOM
122.975 (CTAF) **L**



| | | |
|---------|--|---------|
| ELEV 76 | | TDZE 73 |
|---------|--|---------|



| CATEGORY | A | B | C | D |
|----------|----------------------|----------------------|------------------------|----|
| LNAV MDA | 480-1 407 (500-1) | | 480-1½ 407 (500-1½) | NA |
| CIRCLING | 520-1 444 (500-1) | 640-1 564 (600-1) | 840-2½ 764 (800-2½) | NA |



WILLISTON MUNI (X60)

RNAV (GPS) RWY 5

SE-3, 10 JUL 2025 to 07 AUG 2025