

APP CRS  
**229°**

Rwy Idg  
TDZE  
**76**

Apt Elev  
**76**

**RNAV (GPS) RWY 23**

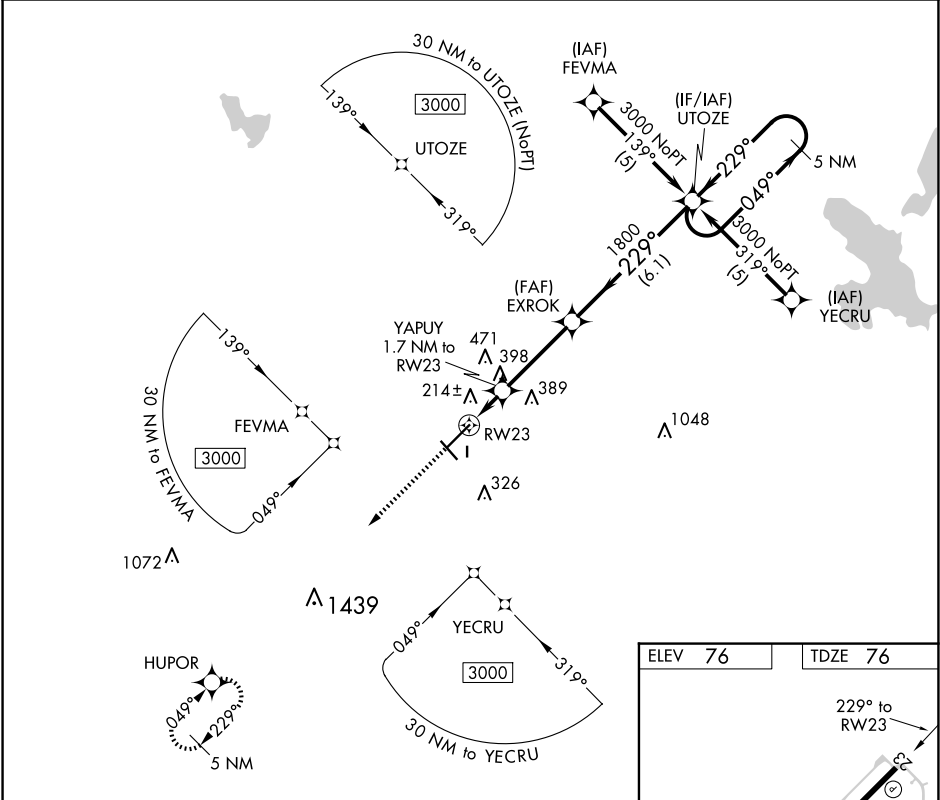
WILLISTON MUNI (X60)

RNP APCH.

When local altimeter setting not received, use Ocala altimeter setting and increase all MDAs 60 feet and all Cat C visibilities ¼ SM. Circling Rwy 14, 32 NA at night. Rwy 23 helicopter visibility reduction below ¾ SM NA. Circling NA to Rwy 18 and 36.

MISSED APPROACH:  
Climb to 3000 direct  
HUPOR and hold.

AWOS-3T <b>118.425</b>	JACKSONVILLE APP CON <b>118.6 251.15</b>	UNICOM <b>122.975 (CTAF) 0</b>
---------------------------	---------------------------------------------	-----------------------------------



3000 HUPOR

VGSI and descent angles not coincident  
(VGSI Angle 3.00/TCH 35).

YAPUY 1.7 NM to RW23

EXROK

UTOZE

5 NM Holding Pattern

RW23

3.46° TCH 45

740

1800

049°

229°

3000

1.7 NM

3.5 NM

6.1 NM

CATEGORY	A	B	C	D
LNNAV MDA	480-1	404 (500-1)	480-1¼ 404 (500-1¼)	NA
CIRCLING	520-1 444 (500-1)	640-1 564 (600-1)	840-2¼ 764 (800-2¼)	NA

