

WAAS CH 65844 W33A	APP CRS 334°	Rwy Idg TDZE 4205 Apt Elev 4218
--	------------------------	---

RNAV (GPS) RWY 33

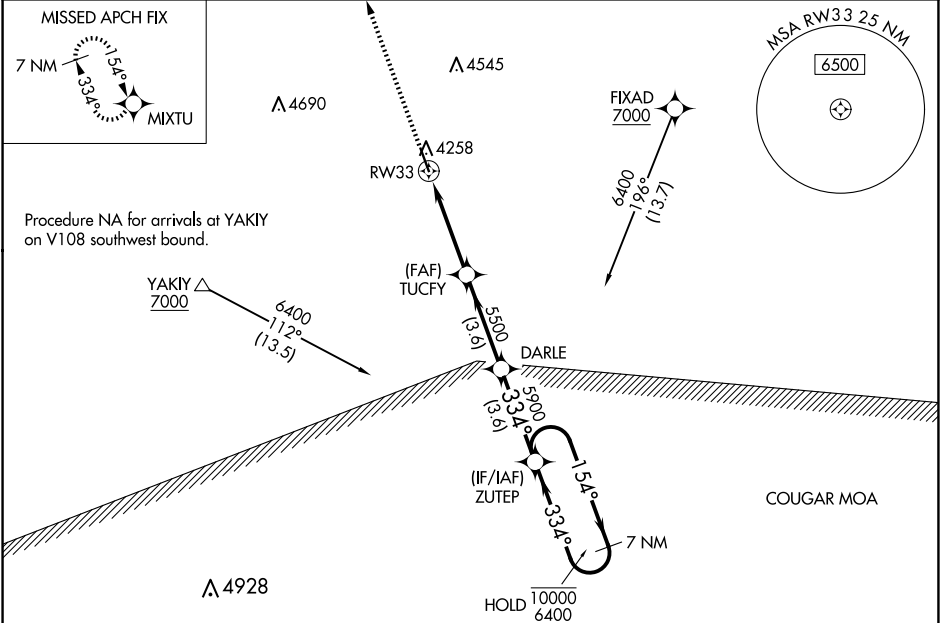
KIT CARSON COUNTY (ITR)

RNP APCH-GPS.

Rwy 33 helicopter visibility reduction below $\frac{3}{4}$ SM NA. For uncompensated Baro-VNAV systems, LNAV/VNAV NA below -9°C or above 54°C.

MISSED APPROACH: Climb to 7000 direct MIXTU and hold, continue climb-in-hold to 7000.

ASOS 135.225	DENVER CENTER 132.7 226.675	UNICOM 122.8 (CTAF) 0
------------------------	---------------------------------------	---------------------------------



7000
↑
MIXTU

TUCFY
5500
1.4 NM to RW33

DARLE
5900
334°

ZUTEP
10000
6400
154°
7 NM Holding Pattern

GP 3.00°
TCH 32

CATEGORY	A	B	C	D
LPV DA	4455-1 250 (300-1)			
LNAV/VNAV DA	4455-1 250 (300-1)			
LNAV MDA	4680-1 475 (500-1)	4680-1 $\frac{3}{8}$ 475 (500-1 $\frac{3}{8}$)		
CIRCLING	4680-1 462 (500-1)	4700-1 482 (500-1)	4860-1 $\frac{3}{4}$ 642 (700-1 $\frac{3}{4}$)	4860-2 642 (700-2)

ELEV 4218
TDZE 4205

5199x1.75
0.38° UP

334°

MIRL Rwy 15-33 0
REIL Rwy 15 and 33 0