

NDB ITR	APP CRS	Rwy Idg	5199
209	139°	TDZE	4218
		Apt Elev	4218

NDB RWY 15

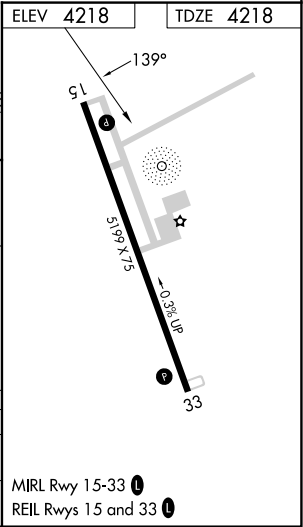
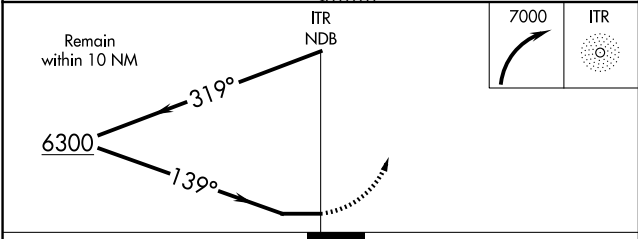
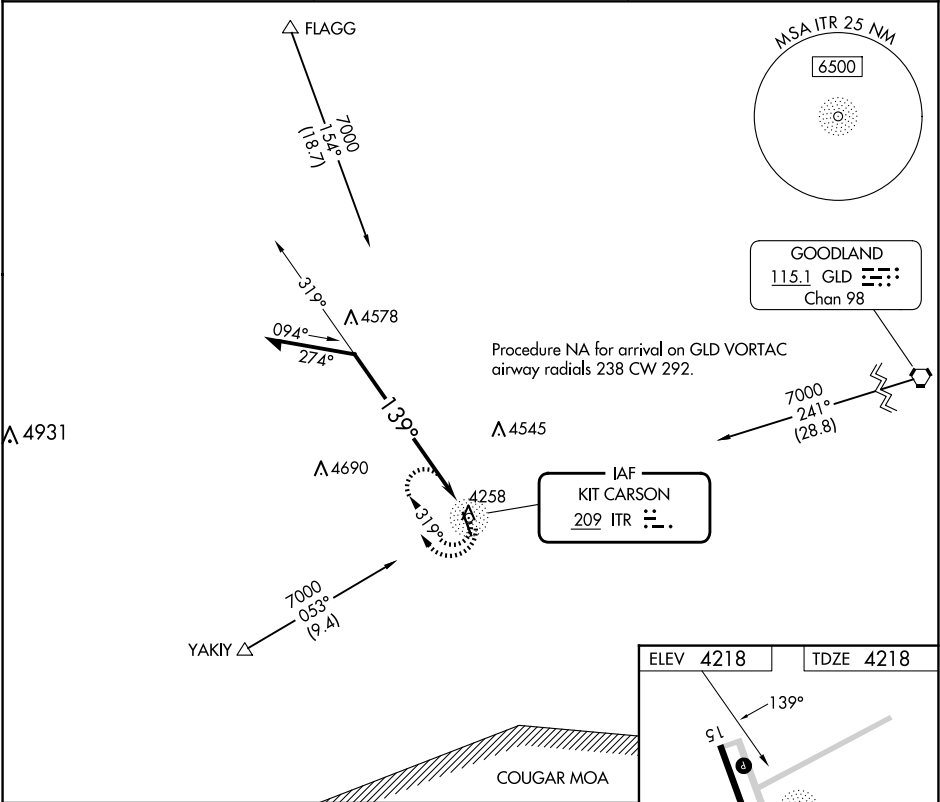
KIT CARSON COUNTY (ITR)

▼

▲

MISSED APPROACH: Climbing right turn to 7000 in ITR NDB holding pattern, continue climb-in-hold to 7000.

ASOS 135.225	DENVER CENTER 132.7 226.675	UNICOM 122.8 (CTAF) 0
-----------------	--------------------------------	--------------------------



CATEGORY	A	B	C	D
S-15	4940-1	722 (800-1)	4940-2	722 (800-2)
CIRCLING	4940-1	722 (800-1)	4940-2	4940-2 1/4 722 (800-2 1/4)