

LOC/DME I-OBG	APP CRS	Rwy Idg	5199
111.9	334°	TDZE	4205
Chan 56		Apt Elev	4218

LOC RWY 33

KIT CARSON COUNTY (ITR)

ADF required.	MISSED APPROACH: Climb to 7000 direct ITR NDB and hold, continue climb-in-hold to 7000.
<div>▽</div> <div>⚠</div>	

ASOS 135.225	DENVER CENTER 132.7 226.675	UNICOM 122.8 (CTAF) 0
-----------------	--------------------------------	--------------------------

ALTERNATE MISSED APCH FIX

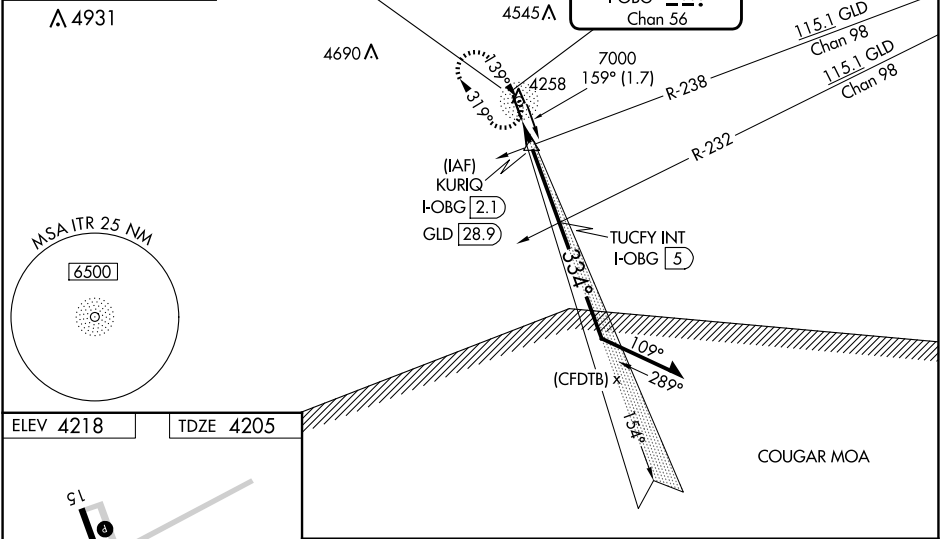
GOODLAND GLD 115.1 Chan 98

FLAGG

Procedure NA for arrivals at FLAGG on V4 westbound.

KIT CARSON 209 ITR

LOCALIZER 111.9 I-OBG Chan 56



ELEV 4218	TDZE 4205	<div>7000 ITR</div> <div></div>	<div>KURIQ I-OBG 2.1 GLD 28.9</div> <div>Remain within 10 NM</div>
<div>51</div> <div>51° x 7.5</div> <div>0.36 UP</div> <div>33</div> <div>334°</div> <div>MIRL Rwy 15-33 0</div> <div>REIL Rwys 15 and 33 0</div> <div>FAF to MAP 4 NM</div>	<div>7000 ITR</div> <div></div>	<div>KURIQ I-OBG 2.1 GLD 28.9</div> <div>Remain within 10 NM</div>	<div>7000 ITR</div> <div></div>
<div>Knots</div> <div>60 90 120 150 180</div> <div>Min:Sec</div> <div>4:00 2:40 2:00 1:36 1:20</div>	<div>7000 ITR</div> <div></div>	<div>KURIQ I-OBG 2.1 GLD 28.9</div> <div>Remain within 10 NM</div>	<div>7000 ITR</div> <div></div>
<div>CIRCLING</div> <div></div>	<div>KURIQ I-OBG 2.1 GLD 28.9</div> <div>Remain within 10 NM</div>	<div>7000 ITR</div> <div></div>	<div>7000 ITR</div> <div></div>